

**Anti-IQGAP1 Monoclonal Antibody**  
**Catalog # ABO14563****Specification**

---

**Anti-IQGAP1 Monoclonal Antibody - Product Information**

Application	WB, IHC, IF, ICC, FC
Primary Accession	<a href="#">P46940</a>
Host	Rabbit
Isotype	Rabbit IgG
Reactivity	Human, Mouse
Clonality	Monoclonal
Format	Liquid

**Description**

Anti-IQGAP1 Monoclonal Antibody . Tested in WB, IHC, ICC/IF, Flow Cytometry applications. This antibody reacts with Human, Mouse.

**Anti-IQGAP1 Monoclonal Antibody - Additional Information**

**Gene ID** 8826

**Other Names**

Ras GTPase-activating-like protein IQGAP1, p195, IQGAP1, KIAA0051

**Application Details**

WB 1:500-1:2000<br>IHC 1:50-1:200<br>ICC/IF 1:50-1:200<br>FC 1:50

**Contents**

Rabbit IgG in phosphate buffered saline, pH 7.4, 150mM NaCl, 0.02% sodium azide and 50% glycerol, 0.4-0.5mg/ml BSA.

**Immunogen**

A synthesized peptide derived from human IQGAP1 Binds to activated CDC42 but does not stimulate its GTPase activity. It associates with calmodulin. Could serve as an assembly scaffold for the organization of a multimolecular complex that would interface incoming signals to the reorganization of the actin cytoskeleton at the plasma membrane.

**Purification**

Affinity-chromatography

**Storage**

**Store at -20°C for one year. For short term storage and frequent use, store at 4°C for up to one month. Avoid repeated freeze-thaw cycles.**

**Anti-IQGAP1 Monoclonal Antibody - Protein Information**

**Name** IQGAP1

**Synonyms** KIAA0051**Function**

Plays a crucial role in regulating the dynamics and assembly of the actin cytoskeleton. Recruited to the cell cortex by interaction with ILK which allows it to cooperate with its effector DIAPH1 to locally stabilize microtubules and allow stable insertion of caveolae into the plasma membrane (By similarity). Binds to activated CDC42 but does not stimulate its GTPase activity. Associates with calmodulin. May promote neurite outgrowth (PubMed:<a href="http://www.uniprot.org/citations/15695813" target="\_blank">15695813</a>). May play a possible role in cell cycle regulation by contributing to cell cycle progression after DNA replication arrest (PubMed:<a href="http://www.uniprot.org/citations/20883816" target="\_blank">20883816</a>).

**Cellular Location**

Cell membrane. Nucleus. Cytoplasm. Cytoplasm, cell cortex {ECO:0000250|UniProtKB:Q9JKF1}. Apical cell membrane. Basolateral cell membrane {ECO:0000250|UniProtKB:Q9JKF1}. Note=Subcellular distribution is regulated by the cell cycle, nuclear levels increase at G1/S phase (PubMed:20883816).

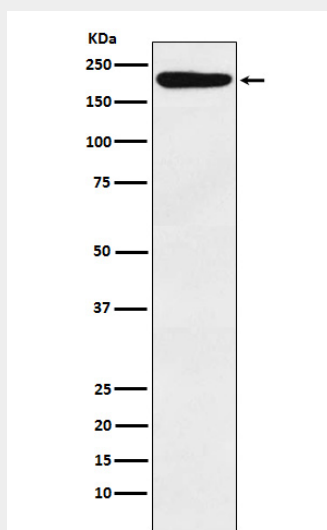
**Tissue Location**

Expressed in the placenta, lung, and kidney (PubMed:8051149). A lower level expression is seen in the heart, liver, skeletal muscle and pancreas (PubMed:8051149)

**Anti-IQGAP1 Monoclonal Antibody - Protocols**

Provided below are standard protocols that you may find useful for product applications.

- [Western Blot](#)
- [Blocking Peptides](#)
- [Dot Blot](#)
- [Immunohistochemistry](#)
- [Immunofluorescence](#)
- [Immunoprecipitation](#)
- [Flow Cytometry](#)
- [Cell Culture](#)

**Anti-IQGAP1 Monoclonal Antibody - Images**

Western blot analysis of IQGAP1 expression in HeLa cell lysate.