

Anti-cbx7 Monoclonal Antibody
Catalog # ABO14568**Specification**

Anti-cbx7 Monoclonal Antibody - Product Information

Application	WB, FC
Primary Accession	O95931
Host	Rabbit
Isotype	Rabbit IgG
Reactivity	Human
Clonality	Monoclonal
Format	Liquid

Description

Anti-cbx7 Monoclonal Antibody . Tested in WB, Flow Cytometry applications. This antibody reacts with Human.

Anti-cbx7 Monoclonal Antibody - Additional Information

Gene ID 23492

Other Names

Chromobox protein homolog 7, CBX7

Application Details

WB 1:500-1:2000
FC 1:50

Contents

Rabbit IgG in phosphate buffered saline, pH 7.4, 150mM NaCl, 0.02% sodium azide and 50% glycerol, 0.4-0.5mg/ml BSA.

Immunogen

A synthesized peptide derived from human cbx7 Control of cell proliferation by Polycomb group proteins (PcG) is an important facet of cellular homeostasis and its disruption can promote tumorigenesis. CBX7 is a novel PcG protein which is found to control the growth of normal cells.

Purification

Affinity-chromatography

Storage

Store at -20°C for one year. For short term storage and frequent use, store at 4°C for up to one month. Avoid repeated freeze-thaw cycles.

Anti-cbx7 Monoclonal Antibody - Protein Information

Name CBX7

Function

Component of a Polycomb group (PcG) multiprotein PRC1-like complex, a complex class required to maintain the transcriptionally repressive state of many genes, including Hox genes, throughout development. PcG PRC1 complex acts via chromatin remodeling and modification of histones; it mediates monoubiquitination of histone H2A 'Lys-119', rendering chromatin heritably changed in its expressibility. Promotes histone H3 trimethylation at 'Lys-9' (H3K9me3). Binds to trimethylated lysine residues in histones, and possibly also other proteins. Regulator of cellular lifespan by maintaining the repression of CDKN2A, but not by inducing telomerase activity.

Cellular Location

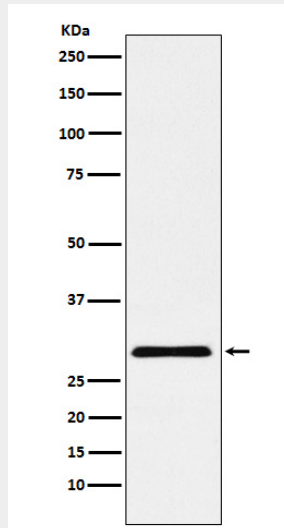
Nucleus

Anti-cbx7 Monoclonal Antibody - Protocols

Provided below are standard protocols that you may find useful for product applications.

- [Western Blot](#)
- [Blocking Peptides](#)
- [Dot Blot](#)
- [Immunohistochemistry](#)
- [Immunofluorescence](#)
- [Immunoprecipitation](#)
- [Flow Cytometry](#)
- [Cell Culture](#)

Anti-cbx7 Monoclonal Antibody - Images



Western blot analysis of cbx7 expression in HepG2 cell lysate.