

Anti-CD23 FCER2 Monoclonal Antibody
Catalog # ABO14579**Specification****Anti-CD23 FCER2 Monoclonal Antibody - Product Information**

Application	WB, IHC, FC
Primary Accession	P06734
Host	Rabbit
Isotype	Rabbit IgG
Reactivity	Human
Clonality	Monoclonal
Format	Liquid

Description

Anti-CD23 FCER2 Monoclonal Antibody . Tested in WB, IHC, Flow Cytometry applications. This antibody reacts with Human.

Anti-CD23 FCER2 Monoclonal Antibody - Additional Information

Gene ID 2208

Other Names

Low affinity immunoglobulin epsilon Fc receptor, BLAST-2, C-type lectin domain family 4 member J, Fc-epsilon-RII, Immunoglobulin E-binding factor, Lymphocyte IgE receptor, CD23, Low affinity immunoglobulin epsilon Fc receptor membrane-bound form, Low affinity immunoglobulin epsilon Fc receptor soluble form, FCER2, CD23A, CLEC4J, FCE2, IGEBF

Application Details

WB 1:500-1:1000
IHC 1:50-1:200
FC 1:30

Contents

Rabbit IgG in phosphate buffered saline, pH 7.4, 150mM NaCl, 0.02% sodium azide and 50% glycerol, 0.4-0.5mg/ml BSA.

Immunogen

A synthesized peptide derived from human CD23 This receptor has essential roles in the regulation of IgE production and in the differentiation of B-cells (it is a B-cell-specific antigen).

Purification

Affinity-chromatography

Storage

Store at -20°C for one year. For short term storage and frequent use, store at 4°C for up to one month. Avoid repeated freeze-thaw cycles.

Anti-CD23 FCER2 Monoclonal Antibody - Protein Information

Name FCER2

Synonyms CD23A, CLEC4J, FCE2, IGEBF

Function

Low-affinity receptor for immunoglobulin E (IgE) and CR2/CD21. Has essential roles in the regulation of IgE production and in the differentiation of B cells. On B cells, initiates IgE-dependent antigen uptake and presentation to T cells (PubMed:2167225). On macrophages, upon IgE binding and antigen cross-linking induces intracellular killing of parasites through activation of L-Arginine- nitric oxide pathway (PubMed:7544003).

Cellular Location

Cell membrane; Single-pass type II membrane protein. Cell membrane; Lipid-anchor. Secreted. Note=Also exists as a soluble excreted form, sCD23

Tissue Location

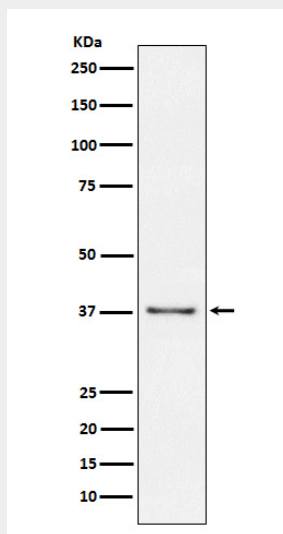
Detected in urine (at protein level).

Anti-CD23 FCER2 Monoclonal Antibody - Protocols

Provided below are standard protocols that you may find useful for product applications.

- [Western Blot](#)
- [Blocking Peptides](#)
- [Dot Blot](#)
- [Immunohistochemistry](#)
- [Immunofluorescence](#)
- [Immunoprecipitation](#)
- [Flow Cytometry](#)
- [Cell Culture](#)

Anti-CD23 FCER2 Monoclonal Antibody - Images



Western blot analysis of CD23 expression in Raji cell lysate.