

**Anti-RRM2 Monoclonal Antibody**  
**Catalog # ABO14602****Specification**

---

**Anti-RRM2 Monoclonal Antibody - Product Information**

Application	WB, IF, ICC, IP
Primary Accession	<a href="#">P31350</a>
Host	Rabbit
Isotype	Rabbit IgG
Reactivity	Human
Clonality	Monoclonal
Format	Liquid

**Description**

Anti-RRM2 Monoclonal Antibody . Tested in WB, ICC/IF, IP applications. This antibody reacts with Human.

**Anti-RRM2 Monoclonal Antibody - Additional Information**

**Gene ID** 6241

**Other Names**

Ribonucleoside-diphosphate reductase subunit M2, 1.17.4.1, Ribonucleotide reductase small chain, Ribonucleotide reductase small subunit, RRM2, RR2

**Application Details**

WB 1:500-1:2000<br>ICC/IF 1:50-1:200<br>IP 1:50

**Contents**

Rabbit IgG in phosphate buffered saline, pH 7.4, 150mM NaCl, 0.02% sodium azide and 50% glycerol, 0.4-0.5mg/ml BSA.

**Immunogen**

A synthesized peptide derived from human RRM2 Provides the precursors necessary for DNA synthesis. Catalyzes the biosynthesis of deoxyribonucleotides from the corresponding ribonucleotides. Inhibits Wnt signaling.

**Purification**

Affinity-chromatography

**Storage**

**Store at -20°C for one year. For short term storage and frequent use, store at 4°C for up to one month. Avoid repeated freeze-thaw cycles.**

**Anti-RRM2 Monoclonal Antibody - Protein Information**

**Name** RRM2

## Synonyms RR2

### Function

Provides the precursors necessary for DNA synthesis. Catalyzes the biosynthesis of deoxyribonucleotides from the corresponding ribonucleotides. Inhibits Wnt signaling.

### Cellular Location

Cytoplasm. Nucleus. Note=Localized to the cytoplasm in S phase cells. May localize to the nucleus in G2 phase cells

## Anti-RRM2 Monoclonal Antibody - Protocols

Provided below are standard protocols that you may find useful for product applications.

- [Western Blot](#)
- [Blocking Peptides](#)
- [Dot Blot](#)
- [Immunohistochemistry](#)
- [Immunofluorescence](#)
- [Immunoprecipitation](#)
- [Flow Cytometry](#)
- [Cell Culture](#)

## Anti-RRM2 Monoclonal Antibody - Images

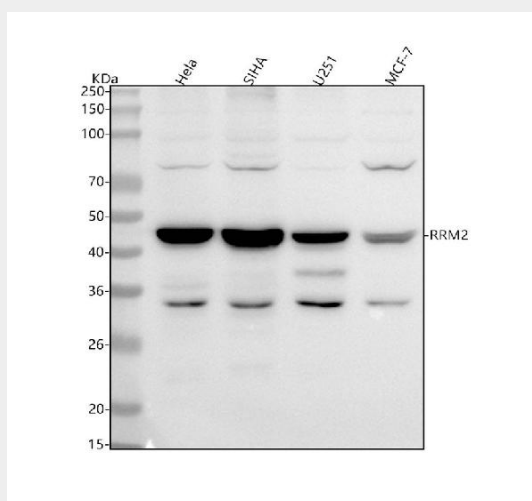


Figure 1. Western blot analysis of RRM2 using anti-RRM2 antibody (M01978).

Electrophoresis was performed on a 5-20% SDS-PAGE gel at 70V (Stacking gel) / 90V (Resolving gel) for 2-3 hours. The sample well of each lane was loaded with 30 ug of sample under reducing conditions.

Lane 1: human HeLa whole cell lysates,  
Lane 2: human SIHA whole cell lysates,  
Lane 3: human U251 whole cell lysates,  
Lane 4: human MCF-7 whole cell lysates.

After electrophoresis, proteins were transferred to a nitrocellulose membrane at 150 mA for 50-90 minutes. Blocked the membrane with 5% non-fat milk/TBS for 1.5 hour at RT. The membrane was incubated with rabbit anti-RRM2 antigen affinity purified monoclonal antibody (Catalog # M01978) at 1:500 overnight at 4°C, then washed with TBS-0.1%Tween 3 times with 5 minutes each and probed with a goat anti-rabbit IgG-HRP secondary antibody at a dilution of 1:5000 for 1.5 hour at

RT. The signal is developed using an Enhanced Chemiluminescent detection (ECL) kit (Catalog # EK1002) with Tanon 5200 system. A specific band was detected for RRM2 at approximately 45 kDa. The expected band size for RRM2 is at 45 kDa.