

**Anti-Iba1 AIF1 Monoclonal Antibody**  
**Catalog # ABO14609****Specification**

---

**Anti-Iba1 AIF1 Monoclonal Antibody - Product Information**

Application	WB, IHC, IF, ICC, IP
Primary Accession	<a href="#">P55008</a>
Host	Rabbit
Isotype	Rabbit IgG
Reactivity	Rat, Human, Mouse
Clonality	Monoclonal
Format	Liquid

**Description**

Anti-Iba1 AIF1 Monoclonal Antibody . Tested in WB, IHC, ICC/IF, IP applications. This antibody reacts with Human, Mouse, Rat.

**Anti-Iba1 AIF1 Monoclonal Antibody - Additional Information**

**Gene ID** 199

**Other Names**

Allograft inflammatory factor 1, AIF-1, Ionized calcium-binding adapter molecule 1, Protein G1, AIF1, G1, IBA1

**Application Details**

WB 1:500-1:1000<br>IHC 1:100-1:500<br>ICC/IF 1:50-1:200<br>IP 1:50

**Contents**

Rabbit IgG in phosphate buffered saline, pH 7.4, 150mM NaCl, 0.02% sodium azide and 50% glycerol, 0.4-0.5mg/ml BSA.

**Immunogen**

A synthesized peptide derived from human Iba1

**Purification**

Affinity-chromatography

**Storage**

**Store at -20°C for one year. For short term storage and frequent use, store at 4°C for up to one month. Avoid repeated freeze-thaw cycles.**

**Anti-Iba1 AIF1 Monoclonal Antibody - Protein Information**

**Name** AIF1

**Synonyms** G1, IBA1

**Function**

Actin-binding protein that enhances membrane ruffling and RAC activation. Enhances the actin-bundling activity of LCP1. Binds calcium. Plays a role in RAC signaling and in phagocytosis. May play a role in macrophage activation and function. Promotes the proliferation of vascular smooth muscle cells and of T-lymphocytes. Enhances lymphocyte migration. Plays a role in vascular inflammation.

**Cellular Location**

Cytoplasm, cytoskeleton {ECO:0000250|UniProtKB:O70200}. Cell projection, ruffle membrane {ECO:0000250|UniProtKB:O70200}; Peripheral membrane protein {ECO:0000250|UniProtKB:O70200}; Cytoplasmic side {ECO:0000250|UniProtKB:O70200}. Cell projection, phagocytic cup {ECO:0000250|UniProtKB:O70200}. Note=Associated with the actin cytoskeleton at membrane ruffles and at sites of phagocytosis {ECO:0000250|UniProtKB:O70200}

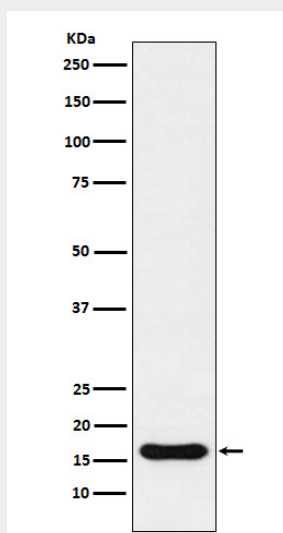
**Tissue Location**

Detected in T-lymphocytes and peripheral blood mononuclear cells.

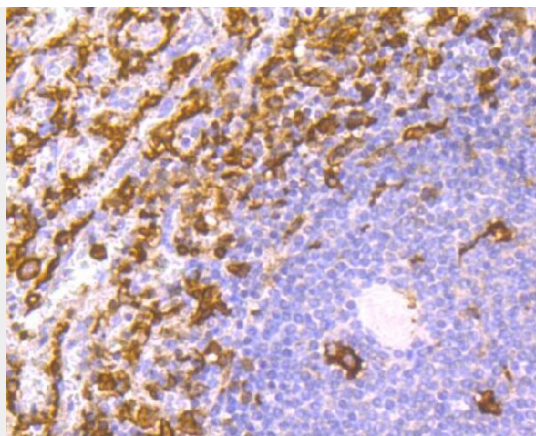
**Anti-Iba1 AIF1 Monoclonal Antibody - Protocols**

Provided below are standard protocols that you may find useful for product applications.

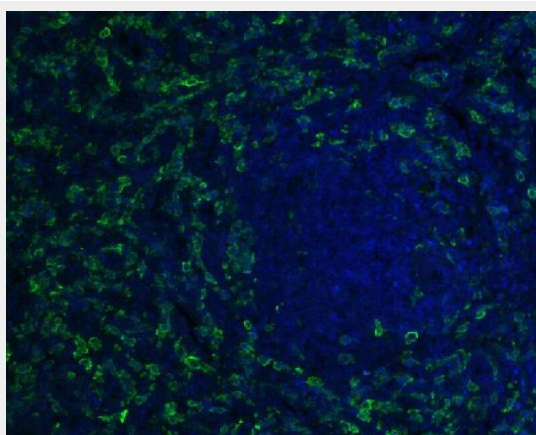
- [Western Blot](#)
- [Blocking Peptides](#)
- [Dot Blot](#)
- [Immunohistochemistry](#)
- [Immunofluorescence](#)
- [Immunoprecipitation](#)
- [Flow Cytometry](#)
- [Cell Culture](#)

**Anti-Iba1 AIF1 Monoclonal Antibody - Images**

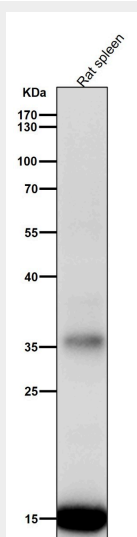
Western blot analysis of Iba1 expression in U937 cell lysate.



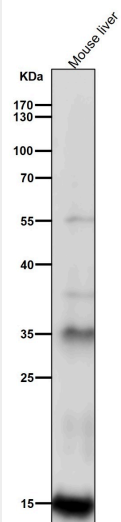
Immunohistochemical analysis of paraffin-embedded human spleen tissue using anti-Iba1 antibody.



Immunofluorescence staining of paraffin-embedded human spleen tissue using anti-Iba1 antibody.



All lanes use the Antibody at 1:2K dilution for 1 hour at room temperature



All lanes use the Antibody at 1:2K dilution for 1 hour at room temperature.