

Anti-Phospho-Bad (S112) Monoclonal Antibody
Catalog # ABO14615**Specification**

Anti-Phospho-Bad (S112) Monoclonal Antibody - Product Information

Application	WB, IP
Primary Accession	Q92934
Host	Rabbit
Isotype	Rabbit IgG
Reactivity	Rat, Human, Mouse
Clonality	Monoclonal
Format	Liquid

Description

Anti-Phospho-Bad (S112) Monoclonal Antibody . Tested in WB, IP applications. This antibody reacts with Human, Mouse, Rat.

Anti-Phospho-Bad (S112) Monoclonal Antibody - Additional Information

Gene ID 572

Other Names

Bcl2-associated agonist of cell death, BAD, Bcl-2-binding component 6, Bcl-2-like protein 8, Bcl2-L-8, Bcl-xL/Bcl-2-associated death promoter, Bcl2 antagonist of cell death, BAD, BBC6, BCL2L8

Application Details

WB 1:500-1:2000
IP 1:20

Contents

Rabbit IgG in phosphate buffered saline, pH 7.4, 150mM NaCl, 0.02% sodium azide and 50% glycerol, 0.4-0.5mg/ml BSA.

Immunogen

A synthesized peptide derived from human Bad Promotes cell death. Successfully competes for the binding to Bcl-X (L), Bcl-2 and Bcl-W, thereby affecting the level of heterodimerization of these proteins with BAX.

Purification

Affinity-chromatography

Storage

Store at -20°C for one year. For short term storage and frequent use, store at 4°C for up to one month. Avoid repeated freeze-thaw cycles.

Anti-Phospho-Bad (S112) Monoclonal Antibody - Protein Information

Name BAD

Synonyms BBC6, BCL2L8

Function

Promotes cell death. Successfully competes for the binding to Bcl-X(L), Bcl-2 and Bcl-W, thereby affecting the level of heterodimerization of these proteins with BAX. Can reverse the death repressor activity of Bcl-X(L), but not that of Bcl-2 (By similarity). Appears to act as a link between growth factor receptor signaling and the apoptotic pathways.

Cellular Location

Mitochondrion outer membrane. Cytoplasm {ECO:0000250|UniProtKB:Q61337}. Note=Colocalizes with HIF3A in the cytoplasm (By similarity). Upon phosphorylation, locates to the cytoplasm. {ECO:0000250|UniProtKB:Q61337}

Tissue Location

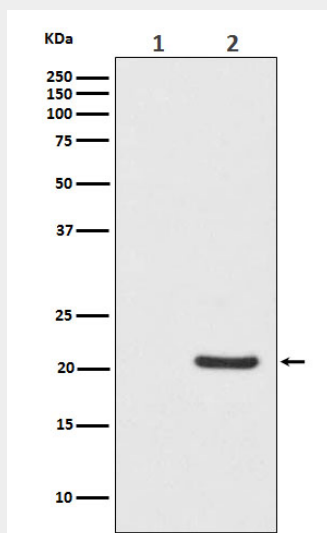
Expressed in a wide variety of tissues.

Anti-Phospho-Bad (S112) Monoclonal Antibody - Protocols

Provided below are standard protocols that you may find useful for product applications.

- [Western Blot](#)
- [Blocking Peptides](#)
- [Dot Blot](#)
- [Immunohistochemistry](#)
- [Immunofluorescence](#)
- [Immunoprecipitation](#)
- [Flow Cytometry](#)
- [Cell Culture](#)

Anti-Phospho-Bad (S112) Monoclonal Antibody - Images



Western blot analysis of Phospho-Bad (S112) expression in (1) HeLa cell lysate; (2) HeLa cell treated with Calyculin A lysate.