

**Anti-PSB9 / LMP2 Rabbit Monoclonal Antibody**  
**Catalog # ABO14647****Specification****Anti-PSB9 / LMP2 Rabbit Monoclonal Antibody - Product Information**

Application	WB, IF, ICC, FC
Primary Accession	<a href="#">P28065</a>
Host	Rabbit
Isotype	Rabbit IgG
Reactivity	Rat, Human, Mouse
Clonality	Monoclonal
Format	Liquid

**Description**

Anti-PSB9 / LMP2 Rabbit Monoclonal Antibody . Tested in WB, ICC/IF, Flow Cytometry applications.  
This antibody reacts with Human, Mouse, Rat.

**Anti-PSB9 / LMP2 Rabbit Monoclonal Antibody - Additional Information**

**Gene ID** 5698

**Other Names**

Proteasome subunit beta type-9, 3.4.25.1, Low molecular mass protein 2, Macropain chain 7, Multicatalytic endopeptidase complex chain 7, Proteasome chain 7, Proteasome subunit beta-1i, Really interesting new gene 12 protein, PSMB9, LMP2, PSMB6i, RING12

**Application Details**

WB 1:1000-1:5000<br>ICC/IF 1:50-1:200<br>FC 1:50

**Contents**

Rabbit IgG in phosphate buffered saline, pH 7.4, 150mM NaCl, 0.02% sodium azide and 50% glycerol, 0.4-0.5mg/ml BSA.

**Immunogen**

A synthesized peptide derived from human Proteasome 20S LMP2

**Purification**

Affinity-chromatography

**Storage**

**At -20°C for one year. Avoid repeated freezing and thawing**

**Anti-PSB9 / LMP2 Rabbit Monoclonal Antibody - Protein Information**

**Name** PSMB9

**Synonyms** LMP2, PSMB6i, RING12

**Function**

The proteasome is a multicatalytic proteinase complex which is characterized by its ability to cleave peptides with Arg, Phe, Tyr, Leu, and Glu adjacent to the leaving group at neutral or slightly basic pH (PubMed:<a href="http://www.uniprot.org/citations/33727065" target="\_blank">33727065</a>, PubMed:<a href="http://www.uniprot.org/citations/34819510" target="\_blank">34819510</a>). The proteasome has an ATP- dependent proteolytic activity. This subunit is involved in antigen processing to generate class I binding peptides. Replacement of PSMB6 by PSMB9 increases the capacity of the immunoproteasome to cleave model peptides after hydrophobic and basic residues.

#### Cellular Location

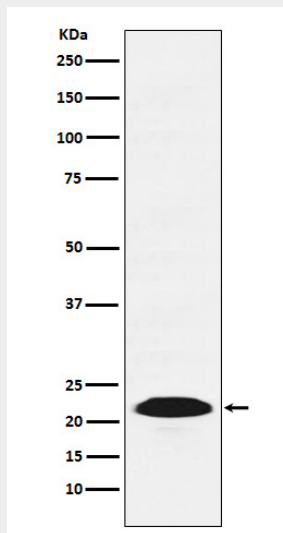
Cytoplasm {ECO:0000255|PROSITE-ProRule:PRU00809}. Nucleus

### Anti-PSB9 / LMP2 Rabbit Monoclonal Antibody - Protocols

Provided below are standard protocols that you may find useful for product applications.

- [Western Blot](#)
- [Blocking Peptides](#)
- [Dot Blot](#)
- [Immunohistochemistry](#)
- [Immunofluorescence](#)
- [Immunoprecipitation](#)
- [Flow Cytometry](#)
- [Cell Culture](#)

### Anti-PSB9 / LMP2 Rabbit Monoclonal Antibody - Images



Western blot analysis of Proteasome 20S LMP2 expression in A431 cell lysate.