

**Anti-PHOX2B Monoclonal Antibody**  
**Catalog # ABO14654****Specification**

---

**Anti-PHOX2B Monoclonal Antibody - Product Information**

Application	WB, IHC, IF, ICC
Primary Accession	<a href="#">Q99453</a>
Host	Rabbit
Isotype	Rabbit IgG
Reactivity	Human, Mouse
Clonality	Monoclonal
Format	Liquid

**Description**

Anti-PHOX2B Monoclonal Antibody . Tested in WB, IHC, ICC/IF applications. This antibody reacts with Human, Mouse.

**Anti-PHOX2B Monoclonal Antibody - Additional Information**

**Gene ID** 8929

**Other Names**

Paired mesoderm homeobox protein 2B, Neuroblastoma Phox, NBPhox, PHOX2B homeodomain protein, Paired-like homeobox 2B, PHOX2B, PMX2B

**Application Details**

WB 1:500-1:2000<br>IHC 1:100-1:500<br>ICC/IF 1:50-1:200

**Contents**

Rabbit IgG in phosphate buffered saline, pH 7.4, 150mM NaCl, 0.02% sodium azide and 50% glycerol, 0.4-0.5mg/ml BSA.

**Immunogen**

A synthesized peptide derived from human PHOX2B Involved in the development of several major noradrenergic neuron populations, including the locus coeruleus. Transcription factor which could determine a neurotransmitter phenotype in vertebrates. Enhances second-messenger-mediated activation of the dopamine beta-hydrolase and c-fos promoters, and of several enhancers including cAMP-response element and serum-response element.

**Purification**

Affinity-chromatography

**Storage**

**Store at -20°C for one year. For short term storage and frequent use, store at 4°C for up to one month. Avoid repeated freeze-thaw cycles.**

**Anti-PHOX2B Monoclonal Antibody - Protein Information**

**Name** PHOX2B

**Synonyms** PMX2B

**Function**

Involved in the development of several major noradrenergic neuron populations, including the locus coeruleus. Transcription factor which could determine a neurotransmitter phenotype in vertebrates. Enhances second-messenger-mediated activation of the dopamine beta- hydrolase and c-fos promoters, and of several enhancers including cAMP- response element and serum-response element.

**Cellular Location**

Nucleus {ECO:0000255|PROSITE-ProRule:PRU00108}.

**Tissue Location**

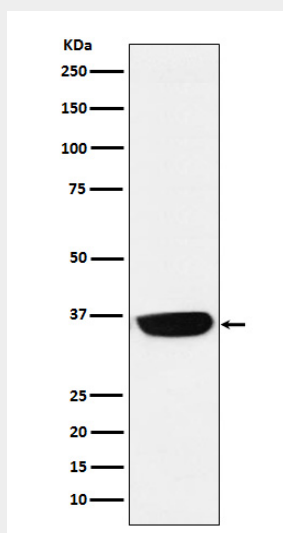
Expressed in neuroblastoma, brain and adrenal gland

**Anti-PHOX2B Monoclonal Antibody - Protocols**

Provided below are standard protocols that you may find useful for product applications.

- [Western Blot](#)
- [Blocking Peptides](#)
- [Dot Blot](#)
- [Immunohistochemistry](#)
- [Immunofluorescence](#)
- [Immunoprecipitation](#)
- [Flow Cytometry](#)
- [Cell Culture](#)

**Anti-PHOX2B Monoclonal Antibody - Images**



Western blot analysis of PHOX2B expression in Neuro-2a cell lysate.