

Anti-Thioredoxin 2 Monoclonal Antibody
Catalog # ABO14660

Specification

Anti-Thioredoxin 2 Monoclonal Antibody - Product Information

Application	WB, IHC, IF, ICC, FC
Primary Accession	Q99757
Host	Rabbit
Isotype	Rabbit IgG
Reactivity	Rat, Human, Mouse
Clonality	Monoclonal
Format	Liquid

Description

Anti-Thioredoxin 2 Monoclonal Antibody . Tested in WB, IHC, ICC/IF, Flow Cytometry applications. This antibody reacts with Human, Mouse, Rat.

Anti-Thioredoxin 2 Monoclonal Antibody - Additional Information

Gene ID 25828

Other Names

Thioredoxin, mitochondrial, MTRX, Mt-Trx, Thioredoxin-2, TXN2, TRX2

Application Details

WB 1:1000-1:5000
IHC 1:50-1:200
ICC/IF 1:50-1:200
FC 1:100

Contents

Rabbit IgG in phosphate buffered saline, pH 7.4, 150mM NaCl, 0.02% sodium azide and 50% glycerol, 0.4-0.5mg/ml BSA.

Immunogen

A synthesized peptide derived from human Thioredoxin 2 Thioredoxins (Trx) are small, multi-functional proteins with oxidoreductase activity and are ubiquitous in essentially all living cells. Trx contains a redox-active disulfide/dithiol group within the conserved Cys-Gly-Pro-Cys active site.

Purification

Affinity-chromatography

Storage

Store at -20°C for one year. For short term storage and frequent use, store at 4°C for up to one month. Avoid repeated freeze-thaw cycles.

Anti-Thioredoxin 2 Monoclonal Antibody - Protein Information

Name TXN2

Synonyms TRX2

Function

Important for the control of mitochondrial reactive oxygen species homeostasis, apoptosis regulation and cell viability (PubMed: [12032145](http://www.uniprot.org/citations/12032145), PubMed: [12080052](http://www.uniprot.org/citations/12080052), PubMed: [26626369](http://www.uniprot.org/citations/26626369)) Is involved in various redox reactions including the reduction of protein disulfide bonds, through the reversible oxidation of its active center dithiol to a disulfide (By similarity).

Cellular Location

Mitochondrion

Tissue Location

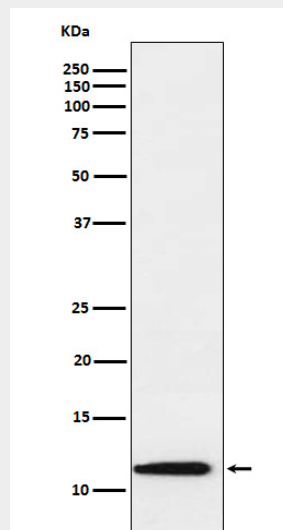
Widely expressed in adult (at protein level) and fetal tissues.

Anti-Thioredoxin 2 Monoclonal Antibody - Protocols

Provided below are standard protocols that you may find useful for product applications.

- [Western Blot](#)
- [Blocking Peptides](#)
- [Dot Blot](#)
- [Immunohistochemistry](#)
- [Immunofluorescence](#)
- [Immunoprecipitation](#)
- [Flow Cytometry](#)
- [Cell Culture](#)

Anti-Thioredoxin 2 Monoclonal Antibody - Images



Western blot analysis of Thioredoxin 2 expression in Raji cell lysate.