

Anti-TGF alpha Monoclonal Antibody
Catalog # ABO14662**Specification**

Anti-TGF alpha Monoclonal Antibody - Product Information

Application	WB, IHC, IF, ICC, IP
Primary Accession	P01135
Host	Rabbit
Isotype	Rabbit IgG
Reactivity	Human
Clonality	Monoclonal
Format	Liquid

Description

Anti-TGF alpha Monoclonal Antibody . Tested in WB, IHC, ICC/IF, IP applications. This antibody reacts with Human.

Anti-TGF alpha Monoclonal Antibody - Additional Information

Gene ID 7039

Other Names

Protransforming growth factor alpha, Transforming growth factor alpha, TGF-alpha, EGF-like TGF, ETGF, TGF type 1, TGFA

Application Details

WB 1:500-1:1000
IHC 1:100-1:500
ICC/IF 1:50-1:200
IP 1:50

Contents

Rabbit IgG in phosphate buffered saline, pH 7.4, 150mM NaCl, 0.02% sodium azide and 50% glycerol, 0.4-0.5mg/ml BSA.

Immunogen

A synthesized peptide derived from human TGF alpha TGF alpha is a mitogenic polypeptide that is able to bind to the EGF receptor and to act synergistically with TGF beta to promote anchorage-independent cell proliferation in soft agar.

Purification

Affinity-chromatography

Storage

Store at -20°C for one year. For short term storage and frequent use, store at 4°C for up to one month. Avoid repeated freeze-thaw cycles.

Anti-TGF alpha Monoclonal Antibody - Protein Information

Name TGFA

Function

TGF alpha is a mitogenic polypeptide that is able to bind to the EGF receptor/EGFR and to act synergistically with TGF beta to promote anchorage-independent cell proliferation in soft agar.

Cellular Location

[Transforming growth factor alpha]: Secreted, extracellular space

Tissue Location

Isoform 1, isoform 3 and isoform 4 are expressed in keratinocytes and tumor-derived cell lines

Anti-TGF alpha Monoclonal Antibody - Protocols

Provided below are standard protocols that you may find useful for product applications.

- [Western Blot](#)
- [Blocking Peptides](#)
- [Dot Blot](#)
- [Immunohistochemistry](#)
- [Immunofluorescence](#)
- [Immunoprecipitation](#)
- [Flow Cytometry](#)
- [Cell Culture](#)

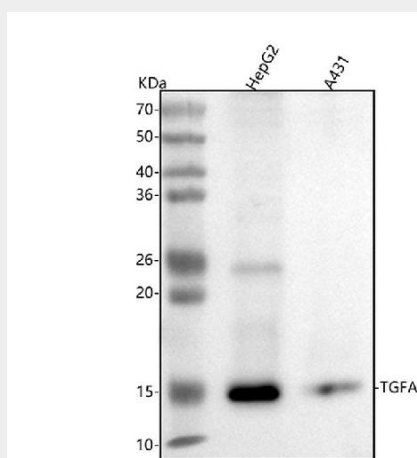
Anti-TGF alpha Monoclonal Antibody - Images

Figure 1. Western blot analysis of TGFA using anti-TGFA antibody (M01779-1).

Electrophoresis was performed on a 5-20% SDS-PAGE gel at 70V (Stacking gel) / 90V (Resolving gel) for 2-3 hours. The sample well of each lane was loaded with 30 ug of sample under reducing conditions.

Lane 1: human HepG2 whole cell lysates,

Lane 2: human A431 whole cell lysates.

After electrophoresis, proteins were transferred to a nitrocellulose membrane at 150 mA for 50-90 minutes. Blocked the membrane with 5% non-fat milk/TBS for 1.5 hour at RT. The membrane was incubated with rabbit anti-TGFA antigen affinity purified monoclonal antibody (Catalog # M01779-1) at 1:500 overnight at 4°C, then washed with TBS-0.1%Tween 3 times with 5 minutes each and probed with a goat anti-rabbit IgG-HRP secondary antibody at a dilution of 1:500 for 1.5 hour at RT. The signal is developed using an Enhanced Chemiluminescent detection (ECL) kit (Catalog # EK1002) with Tanon 5200 system. A specific band was detected for TGFA at

approximately 17 kDa. The expected band size for TGFA is at 17 kDa.