

**Anti-CD48 Monoclonal Antibody**  
**Catalog # ABO14690****Specification****Anti-CD48 Monoclonal Antibody - Product Information**

Application	WB, IHC, IF, ICC, IP
Primary Accession	<a href="#">P09326</a>
Host	Rabbit
Isotype	Rabbit IgG
Reactivity	Human
Clonality	Monoclonal
Format	Liquid

**Description**

Anti-CD48 Monoclonal Antibody . Tested in WB, IHC, ICC/IF, IP applications. This antibody reacts with Human.

**Anti-CD48 Monoclonal Antibody - Additional Information**

**Gene ID** 962

**Other Names**

CD48 antigen, B-lymphocyte activation marker BLAST-1, BCM1 surface antigen, Leukocyte antigen MEM-102, SLAM family member 2, SLAMF2, Signaling lymphocytic activation molecule 2, TCT.1, CD48, CD48, BCM1, BLAST1

**Application Details**

WB 1:500-1:2000<br>IHC 1:50-1:200<br>ICC/IF 1:50-1:200<br>IP 1:50

**Contents**

Rabbit IgG in phosphate buffered saline, pH 7.4, 150mM NaCl, 0.02% sodium azide and 50% glycerol, 0.4-0.5mg/ml BSA.

**Immunogen**

A synthesized peptide derived from human CD48 Ligand for CD2. Might facilitate interaction between activated lymphocytes. Probably involved in regulating T-cell activation.

**Purification**

Affinity-chromatography

**Storage**

**Store at -20°C for one year. For short term storage and frequent use, store at 4°C for up to one month. Avoid repeated freeze-thaw cycles.**

**Anti-CD48 Monoclonal Antibody - Protein Information**

**Name** CD48

**Synonyms** BCM1, BLAST1**Function**

Glycosylphosphatidylinositol (GPI)-anchored cell surface glycoprotein that interacts via its N-terminal immunoglobulin domain with cell surface receptors including CD244/2B4 or CD2 to regulate immune cell function and activation (PubMed:<a href="http://www.uniprot.org/citations/12007789" target="\_blank">12007789</a>, PubMed:<a href="http://www.uniprot.org/citations/19494291" target="\_blank">19494291</a>, PubMed:<a href="http://www.uniprot.org/citations/27249817" target="\_blank">27249817</a>, PubMed:<a href="http://www.uniprot.org/citations/9841922" target="\_blank">9841922</a>). Participates in T-cell signaling transduction by associating with CD2 and efficiently bringing the Src family protein kinase LCK and LAT to the TCR/CD3 complex (PubMed:<a href="http://www.uniprot.org/citations/19494291" target="\_blank">19494291</a>). In turn, promotes LCK phosphorylation and subsequent activation (PubMed:<a href="http://www.uniprot.org/citations/12007789" target="\_blank">12007789</a>). Induces the phosphorylation of the cytoplasmic immunoreceptortyrosine switch motifs (ITSMs) of CD244 initiating a series of signaling events that leads to the generation of the immunological synapse and the directed release of cytolytic granules containing perforin and granzymes by T-lymphocytes and NK- cells (PubMed:<a href="http://www.uniprot.org/citations/27249817" target="\_blank">27249817</a>).

**Cellular Location**

Cell membrane; Lipid-anchor, GPI-anchor. Membrane raft. Secreted

**Tissue Location**

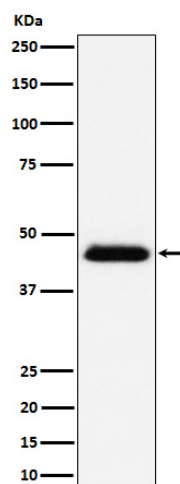
Widely expressed on all hematopoietic cells.

**Anti-CD48 Monoclonal Antibody - Protocols**

Provided below are standard protocols that you may find useful for product applications.

- [Western Blot](#)
- [Blocking Peptides](#)
- [Dot Blot](#)
- [Immunohistochemistry](#)
- [Immunofluorescence](#)
- [Immunoprecipitation](#)
- [Flow Cytometry](#)
- [Cell Culture](#)

**Anti-CD48 Monoclonal Antibody - Images**



Western blot analysis of CD48 expression in Raji cell lysate.