

Anti-Glycophorin C GYPC Monoclonal Antibody
Catalog # ABO14691**Specification**

Anti-Glycophorin C GYPC Monoclonal Antibody - Product Information

| | |
|-------------------|--------------------------|
| Application | WB, IHC, IF, ICC, IP, FC |
| Primary Accession | P04921 |
| Host | Rabbit |
| Isotype | Rabbit IgG |
| Reactivity | Human |
| Clonality | Monoclonal |
| Format | Liquid |

Description

Anti-Glycophorin C GYPC Monoclonal Antibody . Tested in WB, IHC, ICC/IF, IP, Flow Cytometry applications. This antibody reacts with Human.

Anti-Glycophorin C GYPC Monoclonal Antibody - Additional Information

Gene ID 2995

Other Names

Glycophorin-C, Glycoconnectin, Glycophorin-D, GPD, Glycoprotein beta, PAS-2', Sialoglycoprotein D, CD236, GYPC, GLPC, GPC

Application Details

WB 1:500-1:2000
IHC 1:50-1:200
ICC/IF 1:50-1:200
IP 1:50
FC 1:50

Contents

Rabbit IgG in phosphate buffered saline, pH 7.4, 150mM NaCl, 0.02% sodium azide and 50% glycerol, 0.4-0.5mg/ml BSA.

Immunogen

A synthesized peptide derived from human Glycophorin C This protein is a minor sialoglycoprotein in human erythrocyte membranes. The blood group Gerbich antigens and receptors for Plasmodium falciparum merozoites are most likely located within the extracellular domain.

Purification

Affinity-chromatography

Storage

Store at -20°C for one year. For short term storage and frequent use, store at 4°C for up to one month. Avoid repeated freeze-thaw cycles.

Anti-Glycophorin C GYPC Monoclonal Antibody - Protein Information

Name GYPC

Synonyms GLPC, GPC

Function

This protein is a minor sialoglycoprotein in human erythrocyte membranes. The blood group Gerbich antigens and receptors for Plasmodium falciparum merozoites are most likely located within the extracellular domain. Glycophorin-C plays an important role in regulating the stability of red cells.

Cellular Location

Cell membrane; Single-pass type III membrane protein. Note=Linked to the membrane via band 4.1

Tissue Location

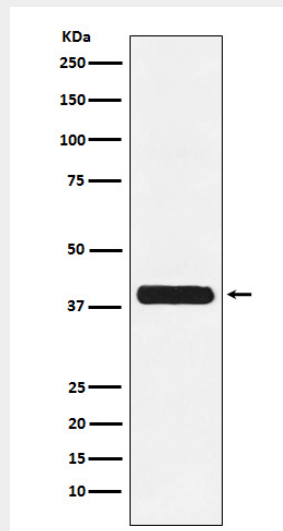
Glycophorin-C is expressed in erythrocytes. Glycophorin-D and IsoGPC are ubiquitously expressed

Anti-Glycophorin C GYPC Monoclonal Antibody - Protocols

Provided below are standard protocols that you may find useful for product applications.

- [Western Blot](#)
- [Blocking Peptides](#)
- [Dot Blot](#)
- [Immunohistochemistry](#)
- [Immunofluorescence](#)
- [Immunoprecipitation](#)
- [Flow Cytometry](#)
- [Cell Culture](#)

Anti-Glycophorin C GYPC Monoclonal Antibody - Images



Western blot analysis of Glycophorin C expression in K562 cell lysate.