

Anti-MYH11 Rabbit Monoclonal Antibody
Catalog # ABO14699**Specification**

Anti-MYH11 Rabbit Monoclonal Antibody - Product Information

Application	WB, IHC
Primary Accession	P35749
Host	Rabbit
Isotype	Rabbit IgG
Reactivity	Human, Mouse
Clonality	Monoclonal
Format	Liquid

Description

Anti-MYH11 Rabbit Monoclonal Antibody . Tested in WB, IHC applications. This antibody reacts with Human, Mouse.

Anti-MYH11 Rabbit Monoclonal Antibody - Additional Information

Gene ID 4629

Other Names

Myosin-11, Myosin heavy chain 11, Myosin heavy chain, smooth muscle isoform, SMMHC, MYH11, KIAA0866

Application Details

WB 1:1000-1:5000
IHC 1:50-1:200

Contents

Rabbit IgG in phosphate buffered saline, pH 7.4, 150mM NaCl, 0.02% sodium azide and 50% glycerol, 0.4-0.5mg/ml BSA.

Immunogen

A synthesized peptide derived from human Myosin, smooth muscle heavy chain 1 and 2.

Purification

Affinity-chromatography

Storage

Store at -20°C for one year. For short term storage and frequent use, store at 4°C for up to one month. Avoid repeated freeze-thaw cycles.

Anti-MYH11 Rabbit Monoclonal Antibody - Protein Information

Name MYH11

Synonyms KIAA0866

Function

Muscle contraction.

Cellular Location

Melanosome. Note=Identified by mass spectrometry in melanosome fractions from stage I to stage IV. Thick filaments of the myofibrils

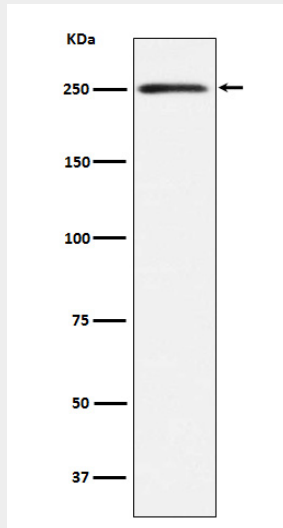
Tissue Location

Smooth muscle; expressed in the umbilical artery, bladder, esophagus and trachea. Isoform 1 is mostly found in slowly contracting tonic muscles.

Anti-MYH11 Rabbit Monoclonal Antibody - Protocols

Provided below are standard protocols that you may find useful for product applications.

- [Western Blot](#)
- [Blocking Peptides](#)
- [Dot Blot](#)
- [Immunohistochemistry](#)
- [Immunofluorescence](#)
- [Immunoprecipitation](#)
- [Flow Cytometry](#)
- [Cell Culture](#)

Anti-MYH11 Rabbit Monoclonal Antibody - Images

Western blot analysis of Myosin, smooth muscle heavy chain 1 and 2 expression in Human bladder lysate.