

**Anti-TIM1 HAVCR1 Monoclonal Antibody**  
**Catalog # ABO14709****Specification**

---

**Anti-TIM1 HAVCR1 Monoclonal Antibody - Product Information**

Application	WB
Primary Accession	<a href="#">Q96D42</a>
Host	Rabbit
Isotype	Rabbit IgG
Reactivity	Rat, Human, Mouse
Clonality	Monoclonal
Format	Liquid

**Description**

Anti-TIM1 HAVCR1 Monoclonal Antibody . Tested in WB application. This antibody reacts with Human, Mouse, Rat.

**Anti-TIM1 HAVCR1 Monoclonal Antibody - Additional Information**

**Gene ID** 26762

**Other Names**

Hepatitis A virus cellular receptor 1, HAVcr-1, Kidney injury molecule 1, KIM-1, T-cell immunoglobulin and mucin domain-containing protein 1, TIMD-1, T-cell immunoglobulin mucin receptor 1, TIM, TIM-1, T-cell membrane protein 1, CD365, HAVCR1, KIM1, TIM1, TIMD1

**Application Details**

WB 1:500-1:2000

**Contents**

Rabbit IgG in phosphate buffered saline, pH 7.4, 150mM NaCl, 0.02% sodium azide and 50% glycerol, 0.4-0.5mg/ml BSA.

**Immunogen**

A synthesized peptide derived from human TIM1.

**Purification**

Affinity-chromatography

**Storage**

**Store at -20°C for one year. For short term storage and frequent use, store at 4°C for up to one month. Avoid repeated freeze-thaw cycles.**

**Anti-TIM1 HAVCR1 Monoclonal Antibody - Protein Information**

**Name** HAVCR1

**Synonyms** KIM1, TIM1, TIMD1

### Function

Phosphatidylserine receptor that plays an important functional role in regulatory B-cells homeostasis including generation, expansion and suppressor functions (By similarity). As P-selectin/SELPLG ligand, plays a specialized role in activated but not naive T-cell trafficking during inflammatory responses (PubMed:<a href="http://www.uniprot.org/citations/24703780" target="\_blank">24703780</a>). Controls thereby T-cell accumulation in the inflamed central nervous system (CNS) and the induction of autoimmune disease (PubMed:<a href="http://www.uniprot.org/citations/24703780" target="\_blank">24703780</a>). Also regulates expression of various anti-inflammatory cytokines and co-inhibitory ligands including IL10 (By similarity). Acts as a regulator of T-cell proliferation (By similarity). May play a role in kidney injury and repair (PubMed:<a href="http://www.uniprot.org/citations/17471468" target="\_blank">17471468</a>).

### Cellular Location

Cell membrane; Single-pass type I membrane protein

### Tissue Location

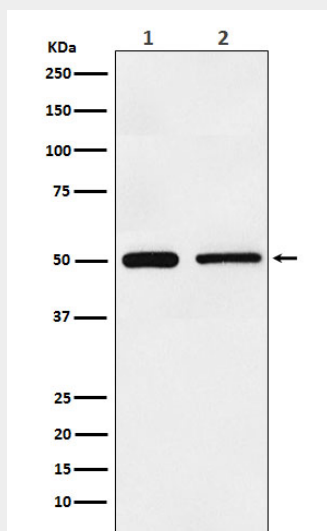
Widely expressed, with highest levels in kidney and testis. Expressed by activated CD4+ T-cells during the development of helper T-cells responses.

## Anti-TIM1 HAVCR1 Monoclonal Antibody - Protocols

Provided below are standard protocols that you may find useful for product applications.

- [Western Blot](#)
- [Blocking Peptides](#)
- [Dot Blot](#)
- [Immunohistochemistry](#)
- [Immunofluorescence](#)
- [Immunoprecipitation](#)
- [Flow Cytometry](#)
- [Cell Culture](#)

## Anti-TIM1 HAVCR1 Monoclonal Antibody - Images



Western blot analysis of TIM 1 expression in (1) HeLa cell lysate; (2) NIH/3T3 cell lysate.