

Anti-DMRT1 Monoclonal Antibody
Catalog # ABO14717**Specification**

Anti-DMRT1 Monoclonal Antibody - Product Information

Application	WB, IP
Primary Accession	Q9Y5R6
Host	Rabbit
Isotype	Rabbit IgG
Reactivity	Human
Clonality	Monoclonal
Format	Liquid

Description

Anti-DMRT1 Monoclonal Antibody . Tested in WB, IP applications. This antibody reacts with Human.

Anti-DMRT1 Monoclonal Antibody - Additional Information

Gene ID 1761

Other Names

Doublesex- and mab-3-related transcription factor 1, DM domain expressed in testis protein 1, DMRT1, DMT1

Application Details

WB 1:500-1:2000
IP 1:80

Contents

Rabbit IgG in phosphate buffered saline, pH 7.4, 150mM NaCl, 0.02% sodium azide and 50% glycerol, 0.4-0.5mg/ml BSA.

Immunogen

A synthesized peptide derived from human DMRT1 May be required for testis development.

Purification

Affinity-chromatography

Storage

Store at -20°C for one year. For short term storage and frequent use, store at 4°C for up to one month. Avoid repeated freeze-thaw cycles.

Anti-DMRT1 Monoclonal Antibody - Protein Information

Name DMRT1

Synonyms DMT1

Function

Transcription factor that plays a key role in male sex determination and differentiation by controlling testis development and male germ cell proliferation. Plays a central role in spermatogonia by inhibiting meiosis in undifferentiated spermatogonia and promoting mitosis, leading to spermatogonial development and allowing abundant and continuous production of sperm. Acts both as a transcription repressor and activator: prevents meiosis by restricting retinoic acid (RA)-dependent transcription and repressing STRA8 expression and promotes spermatogonial development by activating spermatogonial differentiation genes, such as SOHLH1. Also plays a key role in postnatal sex maintenance by maintaining testis determination and preventing feminization: represses transcription of female promoting genes such as FOXL2 and activates male-specific genes. May act as a tumor suppressor. May also play a minor role in oogenesis (By similarity).

Cellular Location

Nucleus {ECO:0000255|PROSITE-ProRule:PRU00070}.

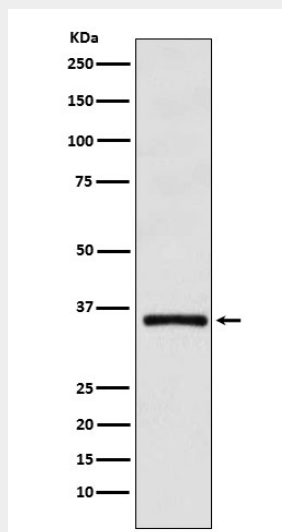
Tissue Location

Testis-specific. Expressed in prostate cancer (at protein level).

Anti-DMRT1 Monoclonal Antibody - Protocols

Provided below are standard protocols that you may find useful for product applications.

- [Western Blot](#)
- [Blocking Peptides](#)
- [Dot Blot](#)
- [Immunohistochemistry](#)
- [Immunofluorescence](#)
- [Immunoprecipitation](#)
- [Flow Cytometry](#)
- [Cell Culture](#)

Anti-DMRT1 Monoclonal Antibody - Images

Western blot analysis of DMRT1 expression in HL-60 cell lysate.