

**Anti-CPS1 Monoclonal Antibody**  
**Catalog # ABO14723****Specification**

---

**Anti-CPS1 Monoclonal Antibody - Product Information**

Application	WB, IHC, IF, ICC, IP
Primary Accession	<a href="#">P31327</a>
Host	Rabbit
Isotype	Rabbit IgG
Reactivity	Rat, Human, Mouse
Clonality	Monoclonal
Format	Liquid

**Description**

Anti-CPS1 Monoclonal Antibody . Tested in WB, IHC, ICC/IF, IP applications. This antibody reacts with Human, Mouse, Rat.

**Anti-CPS1 Monoclonal Antibody - Additional Information**

**Gene ID** 1373

**Other Names**

Carbamoyl-phosphate synthase [ammonia], mitochondrial, 6.3.4.16, Carbamoyl-phosphate synthetase I, CPSase I, CPS1

**Application Details**

WB 1:500-1:2000<br>IHC 1:50-1:200<br>ICC/IF 1:50-1:200<br>IP 1:50

**Contents**

Rabbit IgG in phosphate buffered saline, pH 7.4, 150mM NaCl, 0.02% sodium azide and 50% glycerol, 0.4-0.5mg/ml BSA.

**Immunogen**

A synthesized peptide derived from human CPS1

**Purification**

Affinity-chromatography

**Storage**

**Store at -20°C for one year. For short term storage and frequent use, store at 4°C for up to one month. Avoid repeated freeze-thaw cycles.**

**Anti-CPS1 Monoclonal Antibody - Protein Information**

**Name** CPS1

**Function**

Involved in the urea cycle of ureotelic animals where the enzyme plays an important role in

removing excess ammonia from the cell.

#### Cellular Location

Mitochondrion. Nucleus, nucleolus. Cell membrane {ECO:0000250|UniProtKB:Q8C196}; Peripheral membrane protein; Extracellular side {ECO:0000250|UniProtKB:Q8C196} Note=Localizes to the cell surface of hepatocytes {ECO:0000250|UniProtKB:Q8C196}

#### Tissue Location

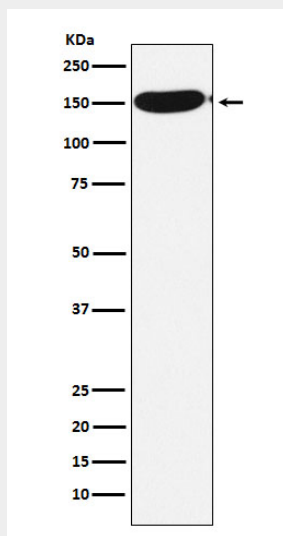
Primarily in the liver and small intestine.

### Anti-CPS1 Monoclonal Antibody - Protocols

Provided below are standard protocols that you may find useful for product applications.

- [Western Blot](#)
- [Blocking Peptides](#)
- [Dot Blot](#)
- [Immunohistochemistry](#)
- [Immunofluorescence](#)
- [Immunoprecipitation](#)
- [Flow Cytometry](#)
- [Cell Culture](#)

### Anti-CPS1 Monoclonal Antibody - Images



Western blot analysis of CPS1 expression in HeLa cell lysate.