

Anti-FHL1 Monoclonal Antibody
Catalog # ABO14725**Specification**

Anti-FHL1 Monoclonal Antibody - Product Information

Application	WB, IHC, IP
Primary Accession	Q13642
Host	Rabbit
Isotype	Rabbit IgG
Reactivity	Rat, Human, Mouse
Clonality	Monoclonal
Format	Liquid

Description

Anti-FHL1 Monoclonal Antibody . Tested in WB, IHC, IP applications. This antibody reacts with Human, Mouse, Rat.

Anti-FHL1 Monoclonal Antibody - Additional Information

Gene ID 2273

Other Names

Four and a half LIM domains protein 1, FHL-1, Skeletal muscle LIM-protein 1, SLIM, SLIM-1, FHL1, SLIM1

Application Details

WB 1:500-1:2000
IHC 1:50-1:200
IP 1:50

Contents

Rabbit IgG in phosphate buffered saline, pH 7.4, 150mM NaCl, 0.02% sodium azide and 50% glycerol, 0.4-0.5mg/ml BSA.

Immunogen

A synthesized peptide derived from human FHL1

Purification

Affinity-chromatography

Storage

Store at -20°C for one year. For short term storage and frequent use, store at 4°C for up to one month. Avoid repeated freeze-thaw cycles.

Anti-FHL1 Monoclonal Antibody - Protein Information

Name FHL1

Synonyms SLIM1

Function

May have an involvement in muscle development or hypertrophy.

Cellular Location

[Isoform 1]: Cytoplasm. [Isoform 2]: Nucleus. Cytoplasm, cytosol. Note=Predominantly nuclear in myoblasts but is cytosolic in differentiated myotubes

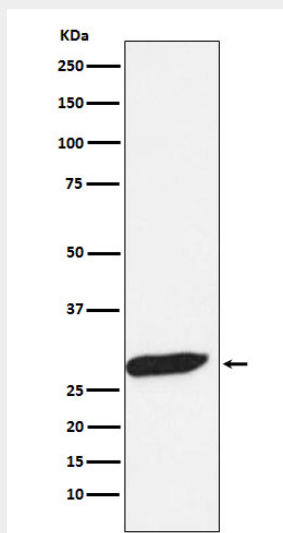
Tissue Location

Isoform 1 is highly expressed in skeletal muscle and to a lesser extent in heart, placenta, ovary, prostate, testis, small intestine, colon and spleen. Expression is barely detectable in brain, lung, liver, kidney, pancreas, thymus and peripheral blood leukocytes. Isoform 2 is expressed in brain, skeletal muscle and to a lesser extent in heart, colon, prostate and small intestine. Isoform 3 is expressed in testis, heart and skeletal muscle

Anti-FHL1 Monoclonal Antibody - Protocols

Provided below are standard protocols that you may find useful for product applications.

- [Western Blot](#)
- [Blocking Peptides](#)
- [Dot Blot](#)
- [Immunohistochemistry](#)
- [Immunofluorescence](#)
- [Immunoprecipitation](#)
- [Flow Cytometry](#)
- [Cell Culture](#)

Anti-FHL1 Monoclonal Antibody - Images

Western blot analysis of FHL1 expression in Human fetal muscle lysate.