

**Anti-PEDF Monoclonal Antibody**  
**Catalog # ABO14740****Specification**

---

**Anti-PEDF Monoclonal Antibody - Product Information**

Application	WB, FC
Primary Accession	<a href="#">P36955</a>
Host	Rabbit
Isotype	Rabbit IgG
Reactivity	Human
Clonality	Monoclonal
Format	Liquid

**Description**

Anti-PEDF Monoclonal Antibody . Tested in WB, Flow Cytometry applications. This antibody reacts with Human.

**Anti-PEDF Monoclonal Antibody - Additional Information**

**Gene ID** 5176

**Other Names**

Pigment epithelium-derived factor, PEDF, Cell proliferation-inducing gene 35 protein, EPC-1, Serpin F1, SERPINF1, PEDF

**Application Details**

WB 1:500-1:2000<br>FC 1:100

**Contents**

Rabbit IgG in phosphate buffered saline, pH 7.4, 150mM NaCl, 0.02% sodium azide and 50% glycerol, 0.4-0.5mg/ml BSA.

**Immunogen**

A synthesized peptide derived from human PEDF Neurotrophic protein; induces extensive neuronal differentiation in retinoblastoma cells. Potent inhibitor of angiogenesis. As it does not undergo the S (stressed) to R (relaxed) conformational transition characteristic of active serpins, it exhibits no serine protease inhibitory activity.

**Purification**

Affinity-chromatography

**Storage**

**Store at -20°C for one year. For short term storage and frequent use, store at 4°C for up to one month. Avoid repeated freeze-thaw cycles.**

**Anti-PEDF Monoclonal Antibody - Protein Information**

**Name** SERPINF1

**Synonyms** PEDF**Function**

Neurotrophic protein; induces extensive neuronal differentiation in retinoblastoma cells. Potent inhibitor of angiogenesis. As it does not undergo the S (stressed) to R (relaxed) conformational transition characteristic of active serpins, it exhibits no serine protease inhibitory activity.

**Cellular Location**

Secreted. Melanosome. Note=Enriched in stage I melanosomes

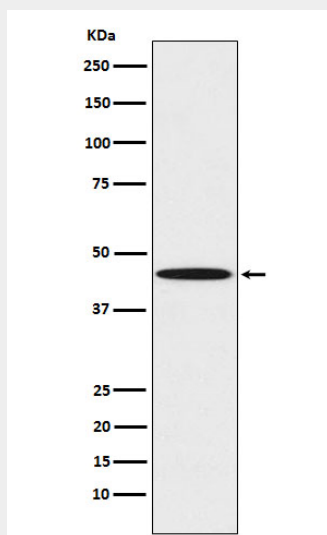
**Tissue Location**

Retinal pigment epithelial cells and blood plasma.

**Anti-PEDF Monoclonal Antibody - Protocols**

Provided below are standard protocols that you may find useful for product applications.

- [Western Blot](#)
- [Blocking Peptides](#)
- [Dot Blot](#)
- [Immunohistochemistry](#)
- [Immunofluorescence](#)
- [Immunoprecipitation](#)
- [Flow Cytometry](#)
- [Cell Culture](#)

**Anti-PEDF Monoclonal Antibody - Images**

Western blot analysis of PEDF expression in K562 cell lysate.