

Anti-Uroplakin3a UPK3A Monoclonal Antibody
Catalog # ABO14744**Specification**

Anti-Uroplakin3a UPK3A Monoclonal Antibody - Product Information

Application	IHC, FC
Primary Accession	O75631
Host	Rabbit
Isotype	Rabbit IgG
Reactivity	Human
Clonality	Monoclonal
Format	Liquid

Description

Anti-Uroplakin3a UPK3A Monoclonal Antibody . Tested in IHC, Flow Cytometry applications. This antibody reacts with Human.

Anti-Uroplakin3a UPK3A Monoclonal Antibody - Additional Information

Gene ID 7380

Other Names

Uroplakin-3a, UP3a, Uroplakin III, UPIII, UPK3A, UPK3

Application Details

IHC 1:1000-1:500
FC 1:100

Contents

Rabbit IgG in phosphate buffered saline, pH 7.4, 150mM NaCl, 0.02% sodium azide and 50% glycerol, 0.4-0.5mg/ml BSA.

Immunogen

A synthesized peptide derived from human Uroplakin III Component of the asymmetric unit membrane (AUM) ; a highly specialized biomembrane elaborated by terminally differentiated urothelial cells. May play an important role in AUM-cytoskeleton interaction in terminally differentiated urothelial cells.

Purification

Affinity-chromatography

Storage

Store at -20°C for one year. For short term storage and frequent use, store at 4°C for up to one month. Avoid repeated freeze-thaw cycles.

Anti-Uroplakin3a UPK3A Monoclonal Antibody - Protein Information

Name UPK3A

Synonyms UPK3**Function**

Component of the asymmetric unit membrane (AUM); a highly specialized biomembrane elaborated by terminally differentiated urothelial cells. May play an important role in AUM-cytoskeleton interaction in terminally differentiated urothelial cells. It also contributes to the formation of urothelial glycocalyx which may play an important role in preventing bacterial adherence (By similarity).

Cellular Location

Endoplasmic reticulum membrane; Single-pass type I membrane protein. Note=Heterodimer formation with UPK1B is a prerequisite to exit out of the endoplasmic reticulum (ER).

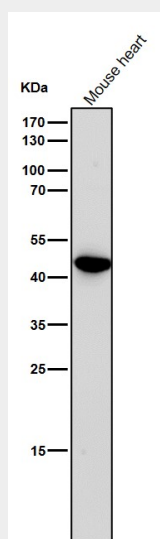
Tissue Location

Expressed in ureter..

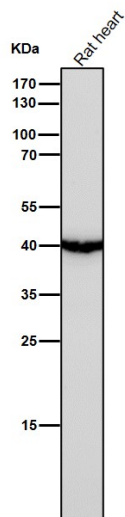
Anti-Uroplakin3a UPK3A Monoclonal Antibody - Protocols

Provided below are standard protocols that you may find useful for product applications.

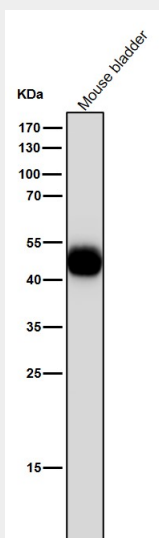
- [Western Blot](#)
- [Blocking Peptides](#)
- [Dot Blot](#)
- [Immunohistochemistry](#)
- [Immunofluorescence](#)
- [Immunoprecipitation](#)
- [Flow Cytometry](#)
- [Cell Culture](#)

Anti-Uroplakin3a UPK3A Monoclonal Antibody - Images

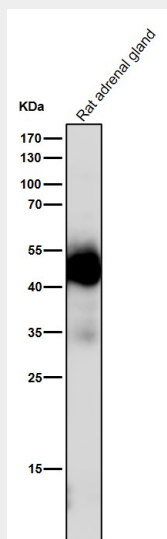
All lanes use the Antibody at 1:1K dilution for 1 hour at room temperature.



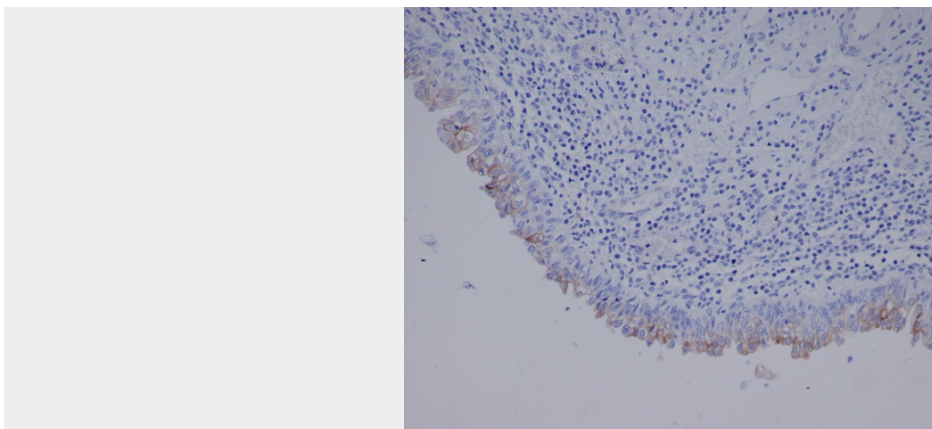
All lanes use the Antibody at 1:1K dilution for 1 hour at room temperature.



All lanes use the Antibody at 1:1K dilution for 1 hour at room temperature.



All lanes use the Antibody at 1:1K dilution for 1 hour at room temperature.



Immunohistochemical analysis of paraffin-embedded human bladder, using Uroplakin III Antibody.