

**Anti-Thyroglobulin TG Monoclonal Antibody**  
Catalog # ABO14745**Specification****Anti-Thyroglobulin TG Monoclonal Antibody - Product Information**

Application	WB, IHC, IF, ICC, IP
Primary Accession	<a href="#">P01266</a>
Host	Rabbit
Isotype	Rabbit IgG
Reactivity	Human
Clonality	Monoclonal
Format	Liquid

**Description**

Anti-Thyroglobulin TG Monoclonal Antibody . Tested in WB, IHC, ICC/IF, IP applications. This antibody reacts with Human.

**Anti-Thyroglobulin TG Monoclonal Antibody - Additional Information**

**Gene ID** 7038

**Other Names**

Thyroglobulin, Tg, TG ([http://www.genenames.org/cgi-bin/gene\\_symbol\\_report?hgnc\\_id=11764](http://www.genenames.org/cgi-bin/gene_symbol_report?hgnc_id=11764))  
HGNC:11764

**Application Details**

WB 1:1000-1:5000<br>IHC 1:50-1:200<br>ICC/IF 1:50-1:200<br>IP 1:50

**Contents**

Rabbit IgG in phosphate buffered saline, pH 7.4, 150mM NaCl, 0.02% sodium azide and 50% glycerol, 0.4-0.5mg/ml BSA.

**Immunogen**

A synthesized peptide derived from human Thyroglobulin Precursor of the iodinated thyroid hormones thyroxine (T4) and triiodothyronine (T3).

**Purification**

Affinity-chromatography

**Storage**

**Store at -20°C for one year. For short term storage and frequent use, store at 4°C for up to one month. Avoid repeated freeze-thaw cycles.**

**Anti-Thyroglobulin TG Monoclonal Antibody - Protein Information**

**Name** TG ([HGNC:11764](#))

### Function

Acts as a substrate for the production of iodinated thyroid hormones thyroxine (T4) and triiodothyronine (T3) (PubMed:<a href="http://www.uniprot.org/citations/17532758" target="\_blank">17532758</a>, PubMed:<a href="http://www.uniprot.org/citations/32025030" target="\_blank">32025030</a>). The synthesis of T3 and T4 involves iodination of selected tyrosine residues of TG/thyroglobulin followed by their oxidative coupling in the thyroid follicle lumen (PubMed:<a href="http://www.uniprot.org/citations/32025030" target="\_blank">32025030</a>). Following TG re-internalization and lysosomal-mediated proteolysis, T3 and T4 are released from the polypeptide backbone leading to their secretion into the bloodstream (PubMed:<a href="http://www.uniprot.org/citations/32025030" target="\_blank">32025030</a>). One dimer produces 7 thyroid hormone molecules (PubMed:<a href="http://www.uniprot.org/citations/32025030" target="\_blank">32025030</a>).

### Cellular Location

Secreted. Note=Secreted into the thyroid follicle lumen (PubMed:19509106). Localizes to colloid globules, a structure formed in the thyroid follicle lumen consisting of cross-linked TG arranged in concentric layers (PubMed:11082042, PubMed:8626858).

### Tissue Location

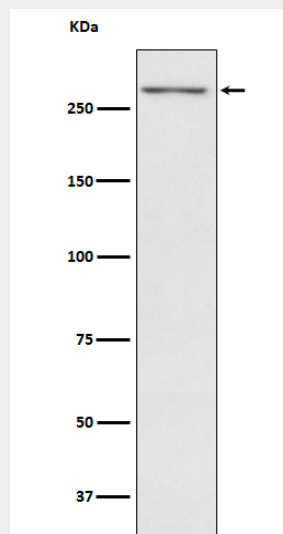
Specifically expressed in the thyroid gland.

## Anti-Thyroglobulin TG Monoclonal Antibody - Protocols

Provided below are standard protocols that you may find useful for product applications.

- [Western Blot](#)
- [Blocking Peptides](#)
- [Dot Blot](#)
- [Immunohistochemistry](#)
- [Immunofluorescence](#)
- [Immunoprecipitation](#)
- [Flow Cytometry](#)
- [Cell Culture](#)

## Anti-Thyroglobulin TG Monoclonal Antibody - Images



Western blot analysis of Thyroglobulin expression in Human thyroid lysate.