

Anti-LI-Cadherin-17 CDH17-Rabbit Monoclonal Antibody
Catalog # ABO14749**Specification**

Anti-LI-Cadherin-17 CDH17-Rabbit Monoclonal Antibody - Product Information

Application	WB, IHC, IP
Primary Accession	Q12864
Host	Rabbit
Isotype	Rabbit IgG
Reactivity	Human
Clonality	Monoclonal
Format	Liquid

Description

Anti-LI-Cadherin-17 CDH17-Rabbit Monoclonal Antibody . Tested in WB, IHC, IP applications. This antibody reacts with Human.

Anti-LI-Cadherin-17 CDH17-Rabbit Monoclonal Antibody - Additional Information

Gene ID 1015

Other Names

Cadherin-17, Intestinal peptide-associated transporter HPT-1, Liver-intestine cadherin, LI-cadherin, CDH17

Application Details

WB 1:500-1:2000
IHC 1:50-1:200
IP 1:50

Contents

Rabbit IgG in phosphate buffered saline, pH 7.4, 150mM NaCl, 0.02% sodium azide and 50% glycerol, 0.4-0.5mg/ml BSA.

Immunogen

A synthesized peptide derived from human LI-Cadherin

Purification

Affinity-chromatography

Storage

Store at -20°C for one year. For short term storage and frequent use, store at 4°C for up to one month. Avoid repeated freeze-thaw cycles.

Anti-LI-Cadherin-17 CDH17-Rabbit Monoclonal Antibody - Protein Information

Name CDH17

Function

Cadherins are calcium-dependent cell adhesion proteins. They preferentially interact with

themselves in a homophilic manner in connecting cells; cadherins may thus contribute to the sorting of heterogeneous cell types. LI-cadherin may have a role in the morphological organization of liver and intestine. Involved in intestinal peptide transport.

Cellular Location

Cell membrane; Single-pass type I membrane protein

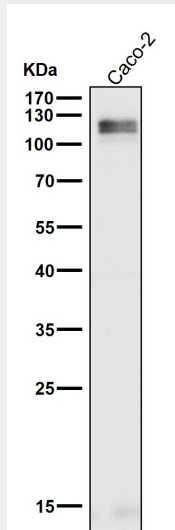
Tissue Location

Expressed in the gastrointestinal tract and pancreatic duct. Not detected in kidney, lung, liver, brain, adrenal gland and skin.

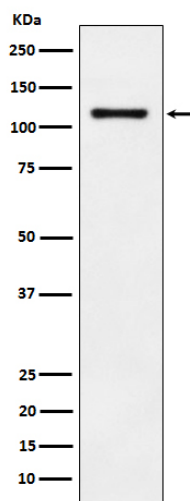
Anti-LI-Cadherin-17 CDH17-Rabbit Monoclonal Antibody - Protocols

Provided below are standard protocols that you may find useful for product applications.

- [Western Blot](#)
- [Blocking Peptides](#)
- [Dot Blot](#)
- [Immunohistochemistry](#)
- [Immunofluorescence](#)
- [Immunoprecipitation](#)
- [Flow Cytometry](#)
- [Cell Culture](#)

Anti-LI-Cadherin-17 CDH17-Rabbit Monoclonal Antibody - Images

All lanes use the Antibody at 1:1K dilution for 1 hour at room temperature.



Western blot analysis of LI-Cadherin expression in HT-29 cell lysate.