

**Anti-Cadherin 16 CDH16 Monoclonal Antibody**  
**Catalog # ABO14752****Specification**

---

**Anti-Cadherin 16 CDH16 Monoclonal Antibody - Product Information**

Application	WB, IHC, IP
Primary Accession	<a href="#">O75309</a>
Host	Rabbit
Isotype	Rabbit IgG
Reactivity	Human, Mouse
Clonality	Monoclonal
Format	Liquid

**Description**

Anti-Cadherin 16 CDH16 Monoclonal Antibody . Tested in WB, IHC, IP applications. This antibody reacts with Human, Mouse.

**Anti-Cadherin 16 CDH16 Monoclonal Antibody - Additional Information**

**Gene ID** 1014

**Other Names**

Cadherin-16, Kidney-specific cadherin, Ksp-cadherin, CDH16

**Application Details**

WB 1:500-1:2000<br>IHC 1:100-1:500<br>IP 1:40

**Contents**

Rabbit IgG in phosphate buffered saline, pH 7.4, 150mM NaCl, 0.02% sodium azide and 50% glycerol, 0.4-0.5mg/ml BSA.

**Immunogen**

A synthesized peptide derived from human Cadherin 16 Cadherins are calcium dependent cell adhesion proteins. They preferentially interact with themselves in a homophilic manner in connecting cells; cadherins may thus contribute to the sorting of heterogeneous cell types.

**Purification**

Affinity-chromatography

**Storage**

**Store at -20°C for one year. For short term storage and frequent use, store at 4°C for up to one month. Avoid repeated freeze-thaw cycles.**

**Anti-Cadherin 16 CDH16 Monoclonal Antibody - Protein Information**

**Name** CDH16

**Function**

Cadherins are calcium-dependent cell adhesion proteins. They preferentially interact with themselves in a homophilic manner in connecting cells; cadherins may thus contribute to the sorting of heterogeneous cell types.

**Cellular Location**

Cell membrane; Single-pass type I membrane protein

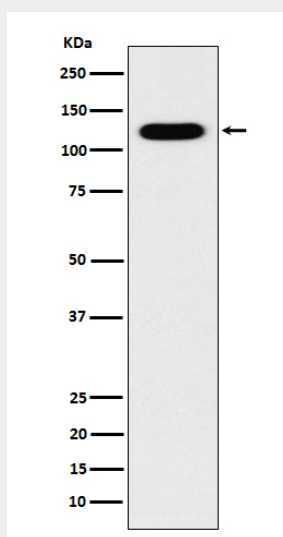
**Tissue Location**

Kidney specific.

**Anti-Cadherin 16 CDH16 Monoclonal Antibody - Protocols**

Provided below are standard protocols that you may find useful for product applications.

- [Western Blot](#)
- [Blocking Peptides](#)
- [Dot Blot](#)
- [Immunohistochemistry](#)
- [Immunofluorescence](#)
- [Immunoprecipitation](#)
- [Flow Cytometry](#)
- [Cell Culture](#)

**Anti-Cadherin 16 CDH16 Monoclonal Antibody - Images**

Western blot analysis of Cadherin 16 expression in Human fetal kidney lysate.