

Anti-Placental lactogen CSH1 Monoclonal Antibody
Catalog # ABO14761**Specification**

Anti-Placental lactogen CSH1 Monoclonal Antibody - Product Information

Application	WB, IHC, IP
Primary Accession	P01243/P0DML2/P0DML3
Host	Rabbit
Isotype	Rabbit IgG
Reactivity	Human
Clonality	Monoclonal
Format	Liquid

Description

Anti-Placental lactogen CSH1 Monoclonal Antibody . Tested in WB, IHC, IP applications. This antibody reacts with Human.

Anti-Placental lactogen CSH1 Monoclonal Antibody - Additional Information**Application Details**

WB 1:1000-1:5000
IHC 1:50-1:200
IP 1:50

Contents

Rabbit IgG in phosphate buffered saline, pH 7.4, 150mM NaCl, 0.02% sodium azide and 50% glycerol, 0.4-0.5mg/ml BSA.

Immunogen

A synthesized peptide derived from human Placental lactogen Produced only during pregnancy and is involved in stimulating lactation, fetal growth and metabolism. Does not interact with GHR but only activates PRLR through zinc-induced dimerization.

Purification

Affinity-chromatography

Storage

Store at -20°C for one year. For short term storage and frequent use, store at 4°C for up to one month. Avoid repeated freeze-thaw cycles.

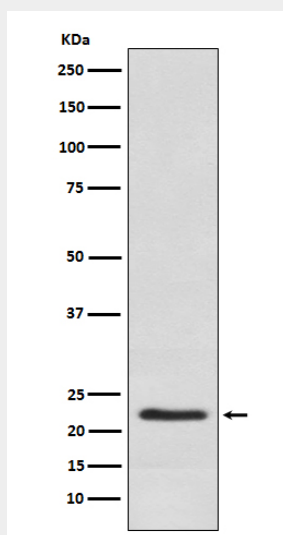
Anti-Placental lactogen CSH1 Monoclonal Antibody - Protein Information**Anti-Placental lactogen CSH1 Monoclonal Antibody - Protocols**

Provided below are standard protocols that you may find useful for product applications.

- [Western Blot](#)
- [Blocking Peptides](#)

- [Dot Blot](#)
- [Immunohistochemistry](#)
- [Immunofluorescence](#)
- [Immunoprecipitation](#)
- [Flow Cytometry](#)
- [Cell Culture](#)

Anti-Placental lactogen CSH1 Monoclonal Antibody - Images



Western blot analysis of Placental lactogen expression in Human placenta lysate.