

Anti-CRX Monoclonal Antibody
Catalog # ABO14776**Specification**

Anti-CRX Monoclonal Antibody - Product Information

Application	WB, IHC
Primary Accession	O43186
Host	Rabbit
Isotype	Rabbit IgG
Reactivity	Human
Clonality	Monoclonal
Format	Liquid

Description

Anti-CRX Monoclonal Antibody . Tested in WB, IHC applications. This antibody reacts with Human.

Anti-CRX Monoclonal Antibody - Additional Information

Gene ID 1406

Other Names

Cone-rod homeobox protein, CRX, CORD2

Application Details

WB 1:500-1:2000
IHC 1:50-1:200

Contents

Rabbit IgG in phosphate buffered saline, pH 7.4, 150mM NaCl, 0.02% sodium azide and 50% glycerol, 0.4-0.5mg/ml BSA.

Immunogen

A synthesized peptide derived from human CRX Binds and transactivates the sequence 5'-TAATC[CA]-3' which is found upstream of several photoreceptor-specific genes, including the opsin genes. Acts synergistically with other transcription factors, e.g. NRL and RX, to regulate photoreceptor cell-specific gene transcription. Essential for the maintenance of mammalian photoreceptors.

Purification

Affinity-chromatography

Storage

Store at -20°C for one year. For short term storage and frequent use, store at 4°C for up to one month. Avoid repeated freeze-thaw cycles.

Anti-CRX Monoclonal Antibody - Protein Information

Name CRX

Synonyms CORD2**Function**

Transcription factor that binds and transactivates the sequence 5'-TAATC[CA]-3' which is found upstream of several photoreceptor-specific genes, including the opsin genes. Acts synergistically with other transcription factors, such as NRL, RORB and RAX, to regulate photoreceptor cell-specific gene transcription. Essential for the maintenance of mammalian photoreceptors.

Cellular Location

Nucleus {ECO:0000255|PROSITE-ProRule:PRU00108}.

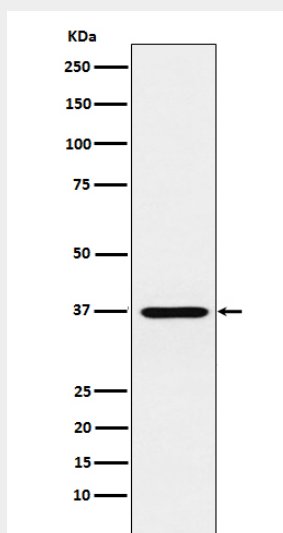
Tissue Location

Retina.

Anti-CRX Monoclonal Antibody - Protocols

Provided below are standard protocols that you may find useful for product applications.

- [Western Blot](#)
- [Blocking Peptides](#)
- [Dot Blot](#)
- [Immunohistochemistry](#)
- [Immunofluorescence](#)
- [Immunoprecipitation](#)
- [Flow Cytometry](#)
- [Cell Culture](#)

Anti-CRX Monoclonal Antibody - Images

Western blot analysis of CRX expression in Y79 cell lysate.