

Anti-CA2 Antibody Picoband™ (monoclonal, 10E11)
Catalog # ABO14830**Specification****Anti-CA2 Antibody Picoband™ (monoclonal, 10E11) - Product Information**

Application	WB, IHC, IF, ICC, FC
Primary Accession	P00918
Host	Mouse
Isotype	Mouse IgG2b
Reactivity	Rat, Human, Mouse
Clonality	Monoclonal
Format	Lyophilized

Description

Anti-CA2 Antibody Picoband™ (monoclonal, 10E11) . Tested in Flow Cytometry, IF, IHC, ICC, WB applications. This antibody reacts with Human, Mouse, Rat.

Reconstitution

Add 0.2ml of distilled water will yield a concentration of 500 µg/ml.

Anti-CA2 Antibody Picoband™ (monoclonal, 10E11) - Additional Information

Gene ID 760

Other Names

Carbonic anhydrase 2, 4.2.1.1, Carbonate dehydratase II, Carbonic anhydrase C, CAC, Carbonic anhydrase II, CA-II, Cyanamide hydratase CA2, 4.2.1.69, CA2

Calculated MW

28 kDa KDa

Application Details

Western blot, 0.1-0.5 µg/ml
 Immunohistochemistry (Paraffin-embedded Section), 0.5-1 µg/ml
 Immunocytochemistry/Immunofluorescence, 5 µg/ml
 Flow Cytometry, 1-3 µg/1x10⁶ cells

Subcellular Localization

Cell membrane. Cytoplasm.

Contents

Each vial contains 4mg Trehalose, 0.9mg NaCl, 0.2mg Na₂HPO₄, 0.05mg NaN₃.

Immunogen

E.coli-derived human CA2 recombinant protein (Position: S2-K260). Human CA2 shares 81.1% and 80.7% amino acid (aa) sequence identity with mouse and rat CA2, respectively.

Cross Reactivity

No cross-reactivity with other proteins.

Storage

Store at -20°C for one year from date of

receipt. After reconstitution, at 4°C for one month. It can also be aliquotted and stored frozen at -20°C for six months. Avoid repeated freeze-thaw cycles.

Anti-CA2 Antibody Picoband™ (monoclonal, 10E11) - Protein Information

Name CA2

Function

Catalyzes the reversible hydration of carbon dioxide (PubMed:11327835, PubMed:11802772, PubMed:11831900, PubMed:12056894, PubMed:12171926, PubMed:1336460, PubMed:14736236, PubMed:15300855, PubMed:15453828, PubMed:15667203, PubMed:15865431, PubMed:16106378, PubMed:16214338, PubMed:16290146, PubMed:16686544, PubMed:16759856, PubMed:16807956, PubMed:17127057, PubMed:17251017, PubMed:17314045, PubMed:17330962, PubMed:17346964, PubMed:17540563, PubMed:17588751, PubMed:17705204, PubMed:18024029, PubMed:18162396, PubMed:18266323, PubMed:18374572, PubMed:18481843, PubMed:18618712, PubMed:18640037, PubMed:18942852, PubMed:1909891, PubMed:1910042, PubMed:19170619, PubMed:19186056, PubMed:19206230, PubMed:19520834, PubMed:19778001, PubMed:7761440, PubMed:7901850, PubMed:8218160, PubMed:8262987, PubMed:8399159, PubMed:<a

[8451242](http://www.uniprot.org/citations/8451242), PubMed: [8485129](http://www.uniprot.org/citations/8485129), PubMed: [8639494](http://www.uniprot.org/citations/8639494), PubMed: [9265618](http://www.uniprot.org/citations/9265618), PubMed: [9398308](http://www.uniprot.org/citations/9398308)). Can also hydrate cyanamide to urea (PubMed: [10550681](http://www.uniprot.org/citations/10550681), PubMed: [11015219](http://www.uniprot.org/citations/11015219)). Stimulates the chloride-bicarbonate exchange activity of SLC26A6 (PubMed: [15990874](http://www.uniprot.org/citations/15990874)). Essential for bone resorption and osteoclast differentiation (PubMed: [15300855](http://www.uniprot.org/citations/15300855)). Involved in the regulation of fluid secretion into the anterior chamber of the eye. Contributes to intracellular pH regulation in the duodenal upper villous epithelium during proton-coupled peptide absorption.

Cellular Location

Cytoplasm. Cell membrane. Note=Colocalized with SLC26A6 at the surface of the cell membrane in order to form a bicarbonate transport metabolon. Displaced from the cytosolic surface of the cell membrane by PKC in phorbol myristate acetate (PMA)-induced cells

Anti-CA2 Antibody Picoband™ (monoclonal, 10E11) - Protocols

Provided below are standard protocols that you may find useful for product applications.

- [Western Blot](#)
- [Blocking Peptides](#)
- [Dot Blot](#)
- [Immunohistochemistry](#)
- [Immunofluorescence](#)
- [Immunoprecipitation](#)
- [Flow Cytometry](#)
- [Cell Culture](#)

Anti-CA2 Antibody Picoband™ (monoclonal, 10E11) - Images

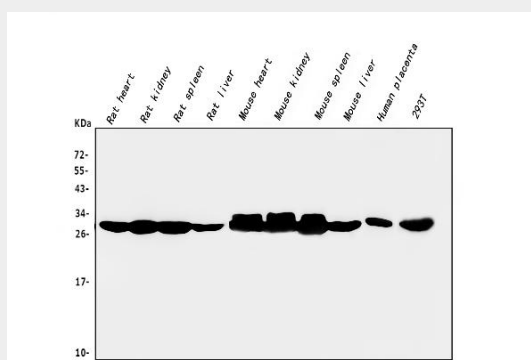


Figure 1. Western blot analysis of CA2 using anti-CA2 antibody (M00143).

Electrophoresis was performed on a 5-20% SDS-PAGE gel at 70V (Stacking gel) / 90V (Resolving gel) for 2-3 hours. The sample well of each lane was loaded with 50ug of sample under reducing conditions.

Lane 1: rat heart tissue lysates,
 Lane 2: rat kidney tissue lysates,
 Lane 3: rat spleen tissue lysates,

Lane 4: rat liver tissue lysates,
Lane 5: mouse heart tissue lysates,
Lane 6: mouse kidney tissue lysates,
Lane 7: mouse spleen tissue lysates,
Lane 8: mouse liver tissue lysates,
Lane 9: human placenta tissue lysates,
Lane 10: human 293T whole cell lysates.

After Electrophoresis, proteins were transferred to a Nitrocellulose membrane at 150mA for 50-90 minutes. Blocked the membrane with 5% Non-fat Milk/ TBS for 1.5 hour at RT. The membrane was incubated with mouse anti-CA2 antigen affinity purified monoclonal antibody (Catalog # M00143) at 0.5 µg/mL overnight at 4°C, then washed with TBS-0.1%Tween 3 times with 5 minutes each and probed with a goat anti-mouse IgG-HRP secondary antibody at a dilution of 1:10000 for 1.5 hour at RT. The signal is developed using an Enhanced Chemiluminescent detection (ECL) kit (Catalog # EK1001) with Tanon 5200 system. A specific band was detected for CA2 at approximately 28KD. The expected band size for CA2 is at 28KD.

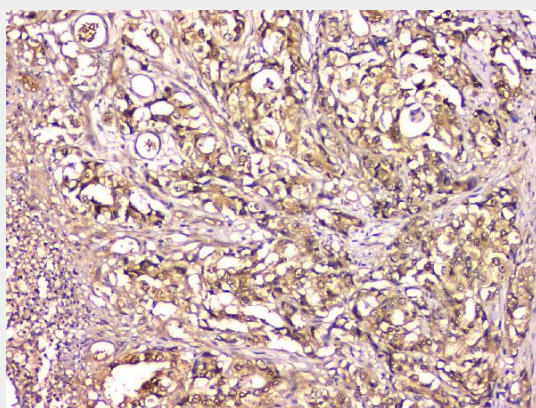


Figure 2. IHC analysis of CA2 using anti-CA2 antibody (M00143).

CA2 was detected in paraffin-embedded section of human gastric cancer tissue. Heat mediated antigen retrieval was performed in EDTA buffer (pH8.0, epitope retrieval solution). The tissue section was blocked with 10% goat serum. The tissue section was then incubated with 1 µg/ml mouse anti-CA2 Antibody (M00143) overnight at 4°C. Biotinylated goat anti-mouse IgG was used as secondary antibody and incubated for 30 minutes at 37°C. The tissue section was developed using Streptavidin-Biotin-Complex (SABC) (Catalog # SA1021) with DAB as the chromogen.

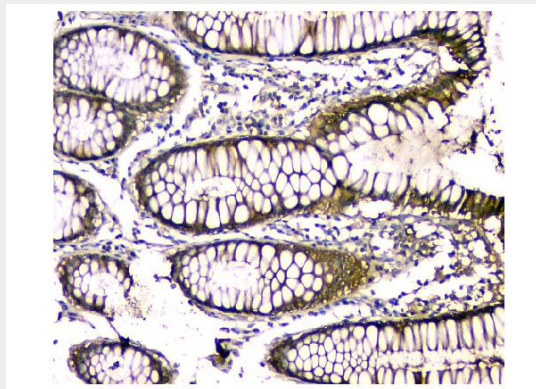


Figure 3. IHC analysis of CA2 using anti-CA2 antibody (M00143).

CA2 was detected in paraffin-embedded section of human colon cancer tissue. Heat mediated antigen retrieval was performed in EDTA buffer (pH8.0, epitope retrieval solution). The tissue section was blocked with 10% goat serum. The tissue section was then incubated with 1 µg/ml mouse anti-CA2 Antibody (M00143) overnight at 4°C. Biotinylated goat anti-mouse IgG was used as secondary antibody and incubated for 30 minutes at 37°C. The tissue section was developed

using Streptavidin-Biotin-Complex (SABC) (Catalog # SA1021) with DAB as the chromogen.

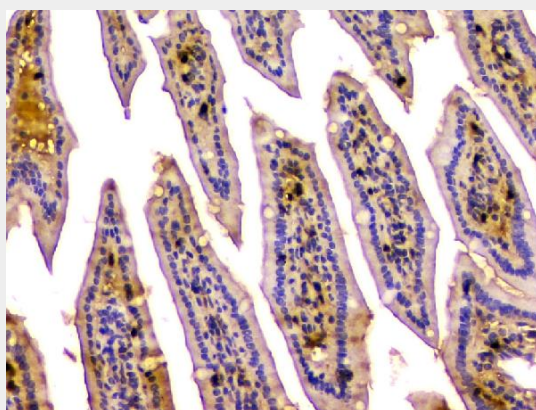


Figure 4. IHC analysis of CA2 using anti-CA2 antibody (M00143).

CA2 was detected in paraffin-embedded section of mouse intestine tissue. Heat mediated antigen retrieval was performed in EDTA buffer (pH8.0, epitope retrieval solution). The tissue section was blocked with 10% goat serum. The tissue section was then incubated with 1 μ g/ml mouse anti-CA2 Antibody (M00143) overnight at 4°C. Biotinylated goat anti-mouse IgG was used as secondary antibody and incubated for 30 minutes at 37°C. The tissue section was developed using Streptavidin-Biotin-Complex (SABC) (Catalog # SA1021) with DAB as the chromogen.

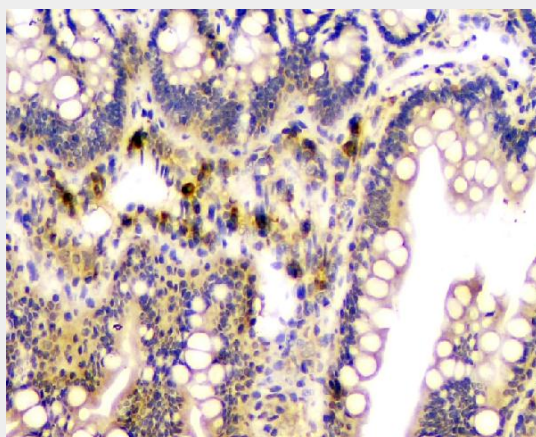


Figure 5. IHC analysis of CA2 using anti-CA2 antibody (M00143).

CA2 was detected in paraffin-embedded section of rat intestine tissue. Heat mediated antigen retrieval was performed in EDTA buffer (pH8.0, epitope retrieval solution). The tissue section was blocked with 10% goat serum. The tissue section was then incubated with 1 μ g/ml mouse anti-CA2 Antibody (M00143) overnight at 4°C. Biotinylated goat anti-mouse IgG was used as secondary antibody and incubated for 30 minutes at 37°C. The tissue section was developed using Streptavidin-Biotin-Complex (SABC) (Catalog # SA1021) with DAB as the chromogen.

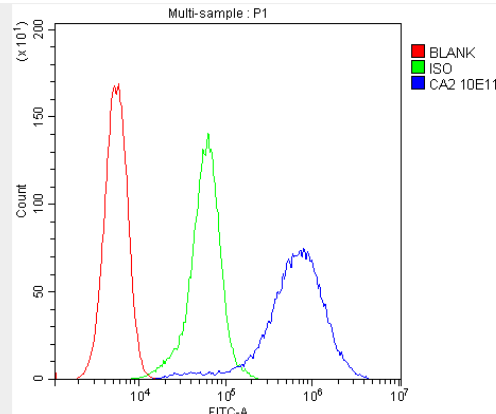


Figure 6. Flow Cytometry analysis of 293T cells using anti-CA2 antibody (M00143). Overlay histogram showing 293T cells stained with M00143 (Blue line). The cells were blocked with 10% normal goat serum. And then incubated with mouse anti-CA2 Antibody (M00143, 1 $\mu\text{g}/1 \times 10^6$ cells) for 30 min at 20°C. DyLight®488 conjugated goat anti-mouse IgG (BA1126, 5-10 $\mu\text{g}/1 \times 10^6$ cells) was used as secondary antibody for 30 minutes at 20°C. Isotype control antibody (Green line) was mouse IgG (1 $\mu\text{g}/1 \times 10^6$) used under the same conditions. Unlabelled sample (Red line) was also used as a control.

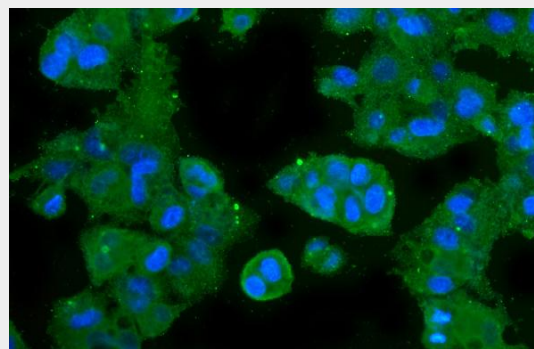


Figure 7. IF analysis of CA2 using anti-CA2 antibody (M00143). CA2 was detected in immunocytochemical section of HEPG2 cells. Enzyme antigen retrieval was performed using IHC enzyme antigen retrieval reagent (AR0022) for 15 mins. The cells were blocked with 10% goat serum. And then incubated with 5 $\mu\text{g}/\text{mL}$ mouse anti-CA2 Antibody (M00143) overnight at 4°C. DyLight®488 Conjugated Goat Anti-Mouse IgG (BA1126) was used as secondary antibody at 1:100 dilution and incubated for 30 minutes at 37°C. The section was counterstained with DAPI. Visualize using a fluorescence microscope and filter sets appropriate for the label used.

Anti-CA2 Antibody Picoband™ (monoclonal, 10E11) - Background

CA2 is a cytosolic enzyme with the highest activity among all known CAs. The carbonic anhydrases (ACs) form a family of enzymes that catalyze the rapid interconversion of carbon dioxide and water to bicarbonate and protons (or vice versa), a reversible reaction that occurs relatively slowly in the absence of a catalyst. Mutations in the CA2 gene result in the CA II deficiency syndrome, an autosomal recessive disorder that produces osteopetrosis, renal tubular acidosis and cerebral calcification. This gene is mapped to 8q22.