

**Anti-UBE2I/Ubc9 Rabbit Monoclonal Antibody**  
**Catalog # ABO14960****Specification****Anti-UBE2I/Ubc9 Rabbit Monoclonal Antibody - Product Information**

Application	WB, IHC, IF, ICC, IP, FC
Primary Accession	<a href="#">P63279</a>
Host	Rabbit
Isotype	Rabbit IgG
Reactivity	Rat, Human, Mouse
Clonality	Monoclonal
Format	Liquid

**Description**

Anti-UBE2I/Ubc9 Rabbit Monoclonal Antibody . Tested in WB, IHC, ICC/IF, IP, Flow Cytometry applications. This antibody reacts with Human, Mouse, Rat.

**Anti-UBE2I/Ubc9 Rabbit Monoclonal Antibody - Additional Information**

**Gene ID** 7329

**Other Names**

SUMO-conjugating enzyme UBC9, 2.3.2.-, RING-type E3 SUMO transferase UBC9, SUMO-protein ligase, Ubiquitin carrier protein 9, Ubiquitin carrier protein I, Ubiquitin-conjugating enzyme E2 I, Ubiquitin-protein ligase I, p18, UBE2I, UBC9, UBCE9

**Calculated MW**

18007 MW KDa

**Application Details**

WB 1:500-1:2000<br>IHC 1:50-1:200<br>ICC/IF 1:50-1:200<br>IP 1:50<br>FC 1:50

**Subcellular Localization**

Nucleus. Cytoplasm. Mainly nuclear. In spermatocytes, localizes in synaptonemal complexes. Recruited by BCL11A into the nuclear body (By similarity)..

**Tissue Specificity**

Expressed in heart, skeletal muscle, pancreas, kidney, liver, lung, placenta and brain. Also expressed in testis and thymus..

**Contents**

Rabbit IgG in phosphate buffered saline, pH 7.4, 150mM NaCl, 0.02% sodium azide and 50% glycerol, 0.4-0.5mg/ml BSA.

**Immunogen**

A synthesized peptide derived from human UBE2I

**Purification**

Affinity-chromatography

**Storage**

**Store at -20°C for one year. For short term storage and frequent use, store at 4°C for up to one month. Avoid repeated freeze-thaw cycles.**

**Anti-UBE2I/Ubc9 Rabbit Monoclonal Antibody - Protein Information**

**Name** UBE2I

**Synonyms** UBC9, UBCE9

**Function**

Accepts the ubiquitin-like proteins SUMO1, SUMO2, SUMO3, SUMO4 and SUMO1P1/SUMO5 from the UBLE1A-UBLE1B E1 complex and catalyzes their covalent attachment to other proteins with the help of an E3 ligase such as RANBP2, CBX4 and ZNF451. Can catalyze the formation of poly-SUMO chains. Necessary for sumoylation of FOXL2 and KAT5. Essential for nuclear architecture and chromosome segregation. Sumoylates p53/TP53 at 'Lys-386'. Mediates sumoylation of ERCC6 which is essential for its transcription-coupled nucleotide excision repair activity (PubMed:<a href="http://www.uniprot.org/citations/26620705" target="\_blank">26620705</a>). Sumoylates SHMT1 at 'Lys-38' or 'Lys-39' leading to RAN-dependent nuclear import of SHMT1 (PubMed:<a href="http://www.uniprot.org/citations/17446168" target="\_blank">17446168</a>). Also sumoylates TYMS and DHFR (PubMed:<a href="http://www.uniprot.org/citations/18067453" target="\_blank">18067453</a>).

**Cellular Location**

Nucleus. Cytoplasm Cytoplasm, perinuclear region Note=Mainly nuclear (By similarity). In spermatocytes, localizes in synaptonemal complexes (PubMed:8610150). Recruited by BCL11A into the nuclear body (By similarity). {ECO:0000250|UniProtKB:P63280, ECO:0000269|PubMed:8610150}

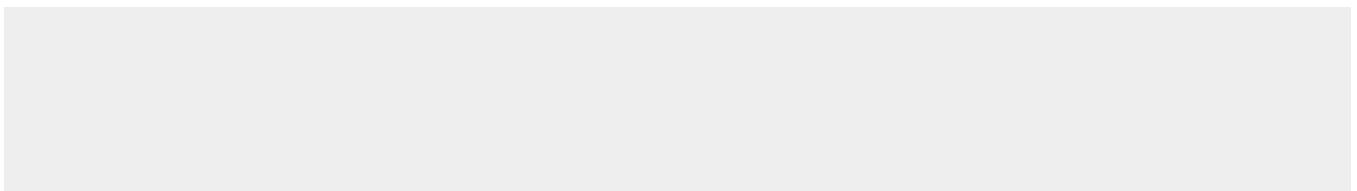
**Tissue Location**

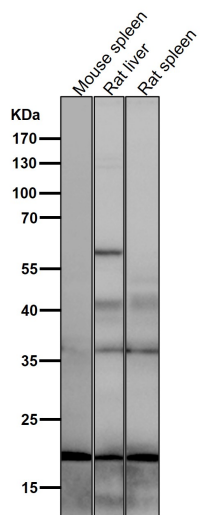
Expressed in heart, skeletal muscle, pancreas, kidney, liver, lung, placenta and brain. Also expressed in testis and thymus.

**Anti-UBE2I/Ubc9 Rabbit Monoclonal Antibody - Protocols**

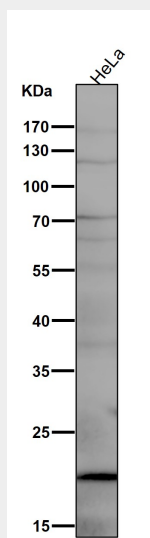
Provided below are standard protocols that you may find useful for product applications.

- [Western Blot](#)
- [Blocking Peptides](#)
- [Dot Blot](#)
- [Immunohistochemistry](#)
- [Immunofluorescence](#)
- [Immunoprecipitation](#)
- [Flow Cytometry](#)
- [Cell Culture](#)

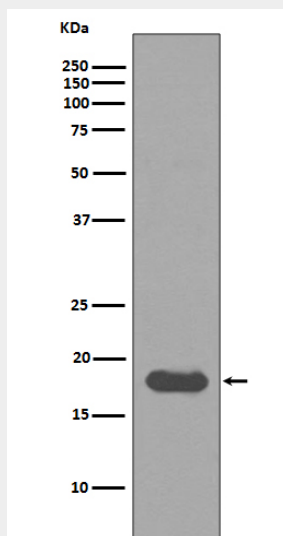
**Anti-UBE2I/Ubc9 Rabbit Monoclonal Antibody - Images**



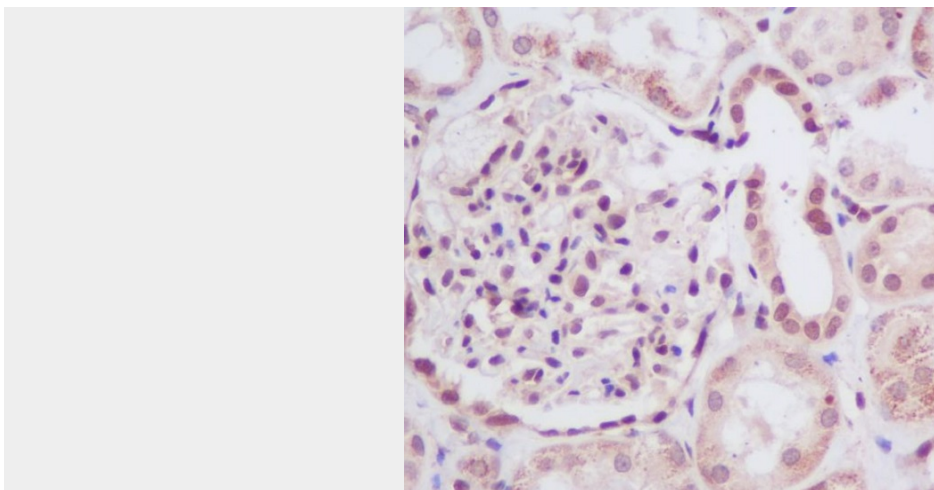
All lanes use the Antibody at 1:5K dilution for 1 hour at room temperature.



All lanes use the Antibody at 1:5K dilution for 1 hour at room temperature.



Western blot analysis of UBE2I expression in HeLa cell lysate.



Immunohistochemical analysis of paraffin-embedded human kidney, using UBE2I Antibody.