

**Anti-GFP-Tag Mouse Monoclonal Antibody**  
**Catalog # ABO15131****Specification**

---

**Anti-GFP-Tag Mouse Monoclonal Antibody - Product Information**

Application	WB, IHC, IF, ICC, IP
Primary Accession	<a href="#">P42212</a>
Host	Mouse
Isotype	IgG1
Reactivity	Rat, Human, Mouse
Clonality	Monoclonal
Format	Liquid

**Description**

Anti-GFP-Tag Mouse Monoclonal Antibody . Tested in WB, IHC, ICC/IF, IP applications. This antibody reacts with Human, Mouse, Rat.

**Anti-GFP-Tag Mouse Monoclonal Antibody - Additional Information****Other Names**

Green fluorescent protein, GFP

**Application Details**

WB 1:3000-1:10000<br>IHC 1:50-1:200<br>ICC/IF 1:50-1:200<br>IP 1:100

**Contents**

Mouse IgG in phosphate buffered saline, pH 7.4, 150mM NaCl, 0.02% sodium azide and 50% glycerol, 0.4-0.5mg/ml BSA.

**Immunogen**

Full-length GFP protein

**Purification**

Affinity-chromatography

**Storage**

**Store at -20°C for one year. For short term storage and frequent use, store at 4°C for up to one month. Avoid repeated freeze-thaw cycles.**

**Anti-GFP-Tag Mouse Monoclonal Antibody - Protein Information****Name** GFP**Function**

Energy-transfer acceptor. Its role is to transduce the blue chemiluminescence of the protein aequorin into green fluorescent light by energy transfer. Fluoresces in vivo upon receiving energy from the Ca(2+)-activated photoprotein aequorin.

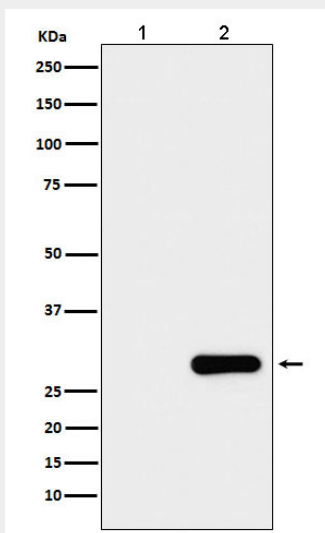
**Tissue Location**

Photocytes.

**Anti-GFP-Tag Mouse Monoclonal Antibody - Protocols**

Provided below are standard protocols that you may find useful for product applications.

- [Western Blot](#)
- [Blocking Peptides](#)
- [Dot Blot](#)
- [Immunohistochemistry](#)
- [Immunofluorescence](#)
- [Immunoprecipitation](#)
- [Flow Cytometry](#)
- [Cell Culture](#)

**Anti-GFP-Tag Mouse Monoclonal Antibody - Images**

Western blot analysis of GFP protein expression in (1) 293T cell lysate; (2) 293T cell transfected with GFP protein lysate.