

**Anti-JAG1 Rabbit Monoclonal Antibody**  
**Catalog # ABO15147****Specification**

---

**Anti-JAG1 Rabbit Monoclonal Antibody - Product Information**

Application	WB, IHC
Primary Accession	<a href="#">P78504</a>
Host	Rabbit
Isotype	IgG
Reactivity	Human
Clonality	Monoclonal
Format	Liquid

**Description**

Anti-JAG1 Rabbit Monoclonal Antibody . Tested in WB, IHC applications. This antibody reacts with Human.

**Anti-JAG1 Rabbit Monoclonal Antibody - Additional Information**

**Gene ID** 182

**Other Names**

Protein jagged-1, Jagged1, hJ1, CD339, JAG1, JAGL1

**Application Details**

WB 1:500-1:2000<br>IHC 1:50-1:200

**Contents**

Rabbit IgG in phosphate buffered saline, pH 7.4, 150mM NaCl, 0.02% sodium azide and 50% glycerol, 0.4-0.5mg/ml BSA.

**Immunogen**

A synthesized peptide derived from human JAG1

**Purification**

Affinity-chromatography

**Storage**

**Store at -20°C for one year. For short term storage and frequent use, store at 4°C for up to one month. Avoid repeated freeze-thaw cycles.**

**Anti-JAG1 Rabbit Monoclonal Antibody - Protein Information**

**Name** JAG1

**Synonyms** JAGL1

**Function**

Ligand for multiple Notch receptors and involved in the mediation of Notch signaling (PubMed:<a href="http://www.uniprot.org/citations/18660822" target="\_blank">18660822</a>, PubMed:<a href="http://www.uniprot.org/citations/20437614" target="\_blank">20437614</a>). May be involved in cell-fate decisions during hematopoiesis (PubMed:<a href="http://www.uniprot.org/citations/9462510" target="\_blank">9462510</a>). Seems to be involved in early and late stages of mammalian cardiovascular development. Inhibits myoblast differentiation (By similarity). Enhances fibroblast growth factor-induced angiogenesis (in vitro).

#### **Cellular Location**

Membrane; Single-pass type I membrane protein. Cell membrane

#### **Tissue Location**

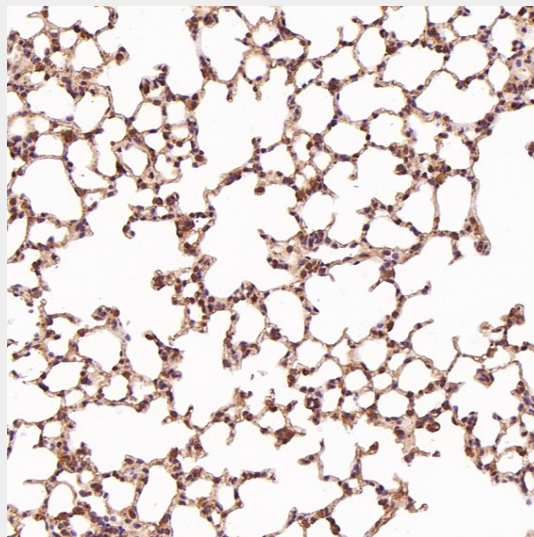
Widely expressed in adult and fetal tissues. In cervix epithelium expressed in undifferentiated subcolumnar reserve cells and squamous metaplasia. Expression is up-regulated in cervical squamous cell carcinoma. Expressed in bone marrow cell line HS-27a which supports the long-term maintenance of immature progenitor cells

### **Anti-JAG1 Rabbit Monoclonal Antibody - Protocols**

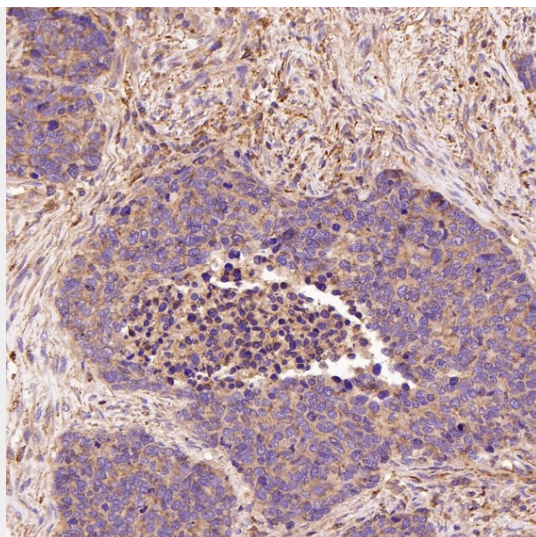
Provided below are standard protocols that you may find useful for product applications.

- [Western Blot](#)
- [Blocking Peptides](#)
- [Dot Blot](#)
- [Immunohistochemistry](#)
- [Immunofluorescence](#)
- [Immunoprecipitation](#)
- [Flow Cytometry](#)
- [Cell Culture](#)

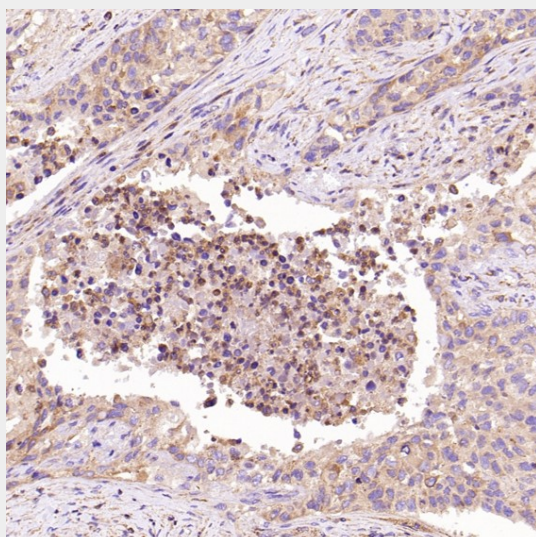
### **Anti-JAG1 Rabbit Monoclonal Antibody - Images**



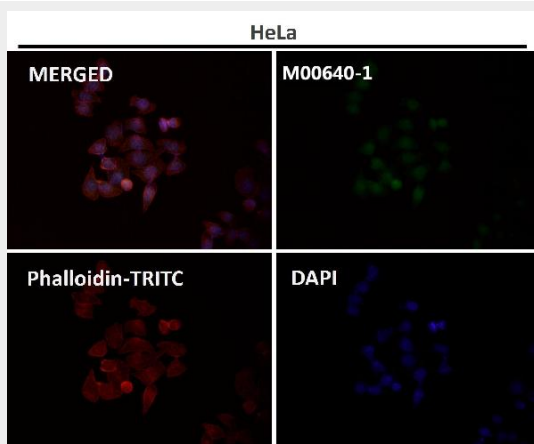
Immunohistochemical analysis of paraffin-embedded Rat liver, using the Antibody at 1:200 dilution.



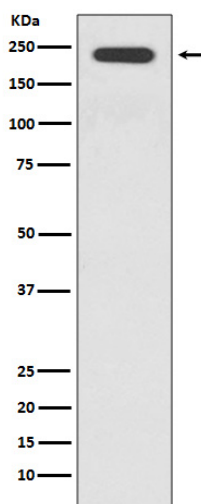
Immunohistochemical analysis of paraffin-embedded Human lung large cell cancer, using the Antibody at 1:50 dilution.



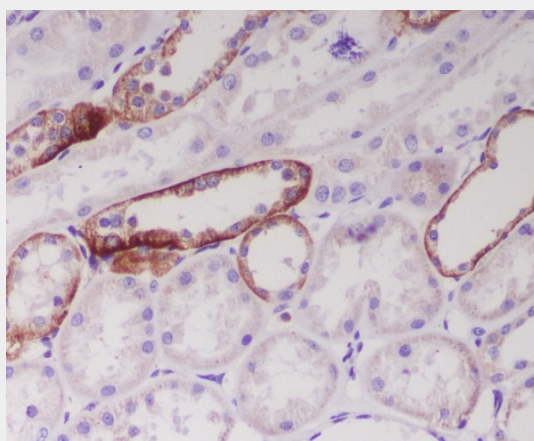
Immunohistochemical analysis of paraffin-embedded Human squamous carcinoma, using the Antibody at 1:300 dilution.



Immunofluorescent analysis using the Antibody at 1:50 dilution.



Western blot analysis of JAG1 expression in HepG2 cell lysate.



Immunohistochemical analysis of paraffin-embedded human kidney, using JAG1 Antibody.