

Anti-Aggrecan Rabbit Monoclonal Antibody
Catalog # ABO15157**Specification**

Anti-Aggrecan Rabbit Monoclonal Antibody - Product Information

Application	IHC
Primary Accession	P16112
Host	Rabbit
Isotype	IgG
Reactivity	Human
Clonality	Monoclonal
Format	Liquid

Description

Anti-Aggrecan Rabbit Monoclonal Antibody . Tested in IHC application. This antibody reacts with Human.

Anti-Aggrecan Rabbit Monoclonal Antibody - Additional Information

Gene ID 176

Other Names

Aggrecan core protein, Cartilage-specific proteoglycan core protein, CSPCP, Chondroitin sulfate proteoglycan core protein 1, Chondroitin sulfate proteoglycan 1, Aggrecan core protein 2, ACAN, AGC1, CSPG1, MSK16

Application Details

IHC 1:50-1:200

Contents

Rabbit IgG in phosphate buffered saline, pH 7.4, 150mM NaCl, 0.02% sodium azide and 50% glycerol, 0.4-0.5mg/ml BSA.

Immunogen

A synthesized peptide derived from human Aggrecan

Purification

Affinity-chromatography

Storage

Store at -20°C for one year. For short term storage and frequent use, store at 4°C for up to one month. Avoid repeated freeze-thaw cycles.

Anti-Aggrecan Rabbit Monoclonal Antibody - Protein Information

Name ACAN

Synonyms AGC1, CSPG1, MSK16

Function

This proteoglycan is a major component of extracellular matrix of cartilagenous tissues. A major function of this protein is to resist compression in cartilage. It binds avidly to hyaluronic acid via an N-terminal globular region.

Cellular Location

Secreted, extracellular space, extracellular matrix {ECO:0000250|UniProtKB:P07898}

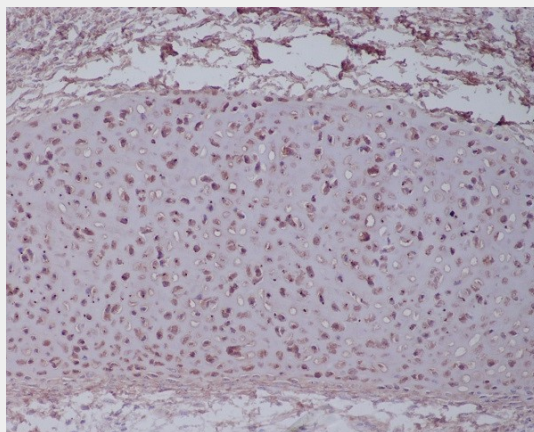
Tissue Location

Detected in fibroblasts (at protein level) (PubMed:36213313). Restricted to cartilage (PubMed:7524681)

Anti-Aggrecan Rabbit Monoclonal Antibody - Protocols

Provided below are standard protocols that you may find useful for product applications.

- [Western Blot](#)
- [Blocking Peptides](#)
- [Dot Blot](#)
- [Immunohistochemistry](#)
- [Immunofluorescence](#)
- [Immunoprecipitation](#)
- [Flow Cytometry](#)
- [Cell Culture](#)

Anti-Aggrecan Rabbit Monoclonal Antibody - Images

Immunohistochemical analysis of paraffin-embedded human cartilage tissue, using Aggrecan Antibody.