

Anti-IP3 Receptor Rabbit Monoclonal Antibody
Catalog # ABO15174**Specification****Anti-IP3 Receptor Rabbit Monoclonal Antibody - Product Information**

Application	WB, IHC, IP
Primary Accession	Q14643
Host	Rabbit
Isotype	IgG
Reactivity	Rat, Human, Mouse
Clonality	Monoclonal
Format	Liquid

Description

Anti-IP3 Receptor Rabbit Monoclonal Antibody . Tested in WB, IHC, IP applications. This antibody reacts with Human, Mouse, Rat.

Anti-IP3 Receptor Rabbit Monoclonal Antibody - Additional Information

Gene ID 3708

Other Names

Inositol 1, 4, 5-trisphosphate-gated calcium channel ITPR1, IP3 receptor isoform 1, IP3R 1, InsP3R1, Inositol 1, 4, 5 trisphosphate receptor, Inositol 1, 4, 5-trisphosphate receptor type 1, Type 1 inositol 1, 4, 5-trisphosphate receptor, Type 1 InsP3 receptor, ITPR1 {ECO:0000303|PubMed:7852357, ECO:0000312|HGNC:HGNC:6180}

Application Details

WB 1:500-1:2000
IHC 1:500-1:1000
IP 1:50

Contents

Rabbit IgG in phosphate buffered saline, pH 7.4, 150mM NaCl, 0.02% sodium azide and 50% glycerol, 0.4-0.5mg/ml BSA.

Immunogen

A synthesized peptide derived from human IP3 Receptor

Purification

Affinity-chromatography

Storage

Store at -20°C for one year. For short term storage and frequent use, store at 4°C for up to one month. Avoid repeated freeze-thaw cycles.

Anti-IP3 Receptor Rabbit Monoclonal Antibody - Protein Information

Name ITPR1 {ECO:0000303|PubMed:7852357, ECO:0000312|HGNC:HGNC:6180}

Function

Inositol 1,4,5-trisphosphate-gated calcium channel that, upon inositol 1,4,5-trisphosphate binding, mediates calcium release from the endoplasmic reticulum (ER) (PubMed:10620513, PubMed:27108797). Undergoes conformational changes upon ligand binding, suggesting structural flexibility that allows the channel to switch from a closed state, capable of interacting with its ligands such as 1,4,5-trisphosphate and calcium, to an open state, capable of transferring calcium ions across the ER membrane (By similarity). Cytoplasmic calcium released from the ER triggers apoptosis by the activation of CAMK2 complex (By similarity). Involved in the regulation of epithelial secretion of electrolytes and fluid through the interaction with AHCYL1 (By similarity). Part of a complex composed of HSPA9, ITPR1 and VDAC1 that regulates mitochondrial calcium-dependent apoptosis by facilitating calcium transport from the ER lumen to the mitochondria intermembrane space thus providing calcium for the downstream calcium channel MCU that directly releases it into mitochondria matrix (By similarity). Regulates fertilization and egg activation by tuning the frequency and amplitude of calcium oscillations (By similarity).

Cellular Location

Endoplasmic reticulum membrane; Multi-pass membrane protein {ECO:0000250|UniProtKB:P29994, ECO:0000255} Cytoplasmic vesicle, secretory vesicle membrane {ECO:0000250|UniProtKB:Q9TU34}; Multi-pass membrane protein {ECO:0000250|UniProtKB:P29994, ECO:0000255}. Cytoplasm, perinuclear region. Note=Found in a complex with HSPA9 and VDAC1 at the endoplasmic reticulum-mitochondria contact sites. {ECO:0000250|UniProtKB:P29994}

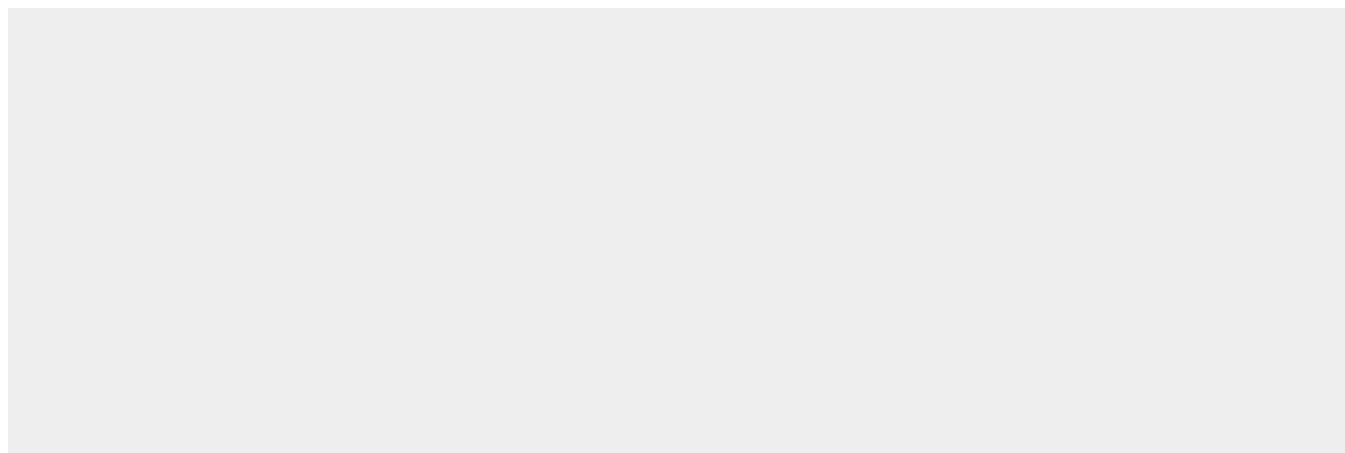
Tissue Location

Widely expressed..

Anti-IP3 Receptor Rabbit Monoclonal Antibody - Protocols

Provided below are standard protocols that you may find useful for product applications.

- [Western Blot](#)
- [Blocking Peptides](#)
- [Dot Blot](#)
- [Immunohistochemistry](#)
- [Immunofluorescence](#)
- [Immunoprecipitation](#)
- [Flow Cytometry](#)
- [Cell Culture](#)

Anti-IP3 Receptor Rabbit Monoclonal Antibody - Images

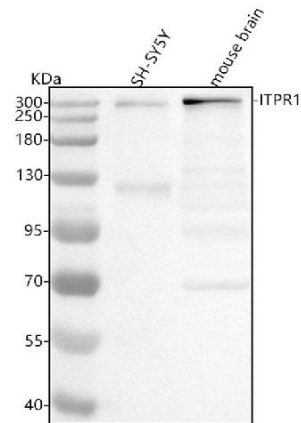


Figure 1. Western blot analysis of IP3 Receptor using anti-IP3 Receptor antibody (M01465-1). Electrophoresis was performed on a 5-20% SDS-PAGE gel at 70V (Stacking gel) / 90V (Resolving gel) for 2-3 hours. The sample well of each lane was loaded with 30 ug of sample under reducing conditions.

Lane 1: human SH-SY5Y whole cell lysates,

Lane 2: mouse brain tissue lysates.

After electrophoresis, proteins were transferred to a nitrocellulose membrane at 150 mA for 50-90 minutes. Blocked the membrane with 5% non-fat milk/TBS for 1.5 hour at RT. The membrane was incubated with rabbit anti-IP3 Receptor antigen affinity purified monoclonal antibody (Catalog # M01465-1) at 1:500 overnight at 4°C, then washed with TBS-0.1%Tween 3 times with 5 minutes each and probed with a goat anti-rabbit IgG-HRP secondary antibody at a dilution of 1:500 for 1.5 hour at RT. The signal is developed using an Enhanced Chemiluminescent detection (ECL) kit (Catalog # EK1002) with Tanon 5200 system. A specific band was detected for IP3 Receptor at approximately 314 kDa. The expected band size for IP3 Receptor is at 314 kDa.