

Anti-OGG1 Rabbit Monoclonal Antibody
Catalog # ABO15176**Specification**

Anti-OGG1 Rabbit Monoclonal Antibody - Product Information

Application	WB
Primary Accession	O15527
Host	Rabbit
Isotype	IgG
Reactivity	Human
Clonality	Monoclonal
Format	Liquid

Description

Anti-OGG1 Rabbit Monoclonal Antibody . Tested in WB application. This antibody reacts with Human.

Anti-OGG1 Rabbit Monoclonal Antibody - Additional Information

Gene ID 4968

Other Names

N-glycosylase/DNA lyase, 8-oxoguanine DNA glycosylase, 3.2.2.-, DNA-(apurinic or apyrimidinic site) lyase, AP lyase, 4.2.99.18, OGG1, MMH, MUTM, OGH1

Application Details

WB 1:500-1:2000

Contents

Rabbit IgG in phosphate buffered saline, pH 7.4, 150mM NaCl, 0.02% sodium azide and 50% glycerol, 0.4-0.5mg/ml BSA.

Immunogen

A synthesized peptide derived from human OGG1

Purification

Affinity-chromatography

Storage

Store at -20°C for one year. For short term storage and frequent use, store at 4°C for up to one month. Avoid repeated freeze-thaw cycles.

Anti-OGG1 Rabbit Monoclonal Antibody - Protein Information

Name OGG1

Synonyms MMH, MUTM, OGH1

Function

DNA repair enzyme that incises DNA at 8-oxoG residues. Excises 7,8-dihydro-8-oxoguanine and 2,6-diamino-4-hydroxy-5-N- methylformamidopyrimidine (FAPY) from damaged DNA. Has a beta-lyase activity that nicks DNA 3' to the lesion.

Cellular Location

Nucleus, nucleoplasm. Nucleus speckle. Nucleus matrix. Note=Together with APEX1 is recruited to nuclear speckles in UVA-irradiated cells [Isoform 2A]; Mitochondrion.

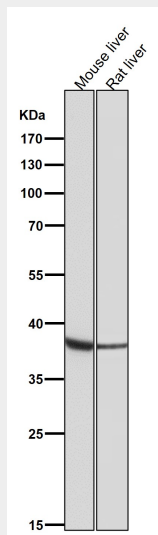
Tissue Location

Ubiquitous.

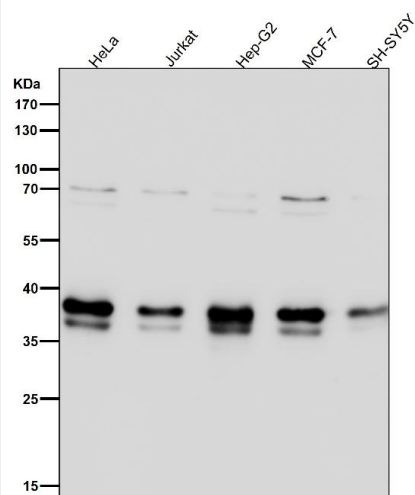
Anti-OGG1 Rabbit Monoclonal Antibody - Protocols

Provided below are standard protocols that you may find useful for product applications.

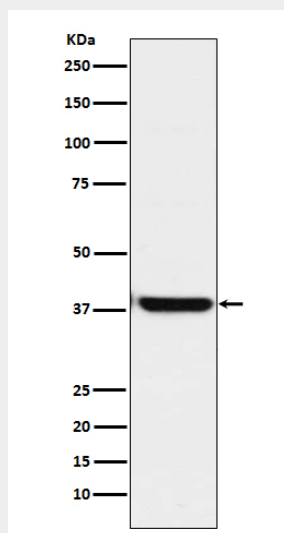
- [Western Blot](#)
- [Blocking Peptides](#)
- [Dot Blot](#)
- [Immunohistochemistry](#)
- [Immunofluorescence](#)
- [Immunoprecipitation](#)
- [Flow Cytometry](#)
- [Cell Culture](#)

Anti-OGG1 Rabbit Monoclonal Antibody - Images

All lanes use the Antibody at 1:2W dilution for 1 hour at room temperature.



All lanes use the Antibody at 1:2W dilution for 1 hour at room temperature.



Western blot analysis of OGG1 expression in HepG2 cell lysate.