

Anti-CD42b Rabbit Monoclonal Antibody
Catalog # ABO15184**Specification****Anti-CD42b Rabbit Monoclonal Antibody - Product Information**

Application	WB, IHC
Primary Accession	P07359
Host	Rabbit
Isotype	IgG
Reactivity	Human
Clonality	Monoclonal
Format	Liquid

Description

Anti-CD42b Rabbit Monoclonal Antibody . Tested in WB, IHC applications. This antibody reacts with Human.

Anti-CD42b Rabbit Monoclonal Antibody - Additional Information

Gene ID 2811

Other Names

Platelet glycoprotein Ib alpha chain, GP-Ib alpha, GPIb-alpha, GPIbA, Glycoprotein Ibalpha, Antigen CD42b-alpha, CD42b, Glycocalicin, GP1BA

Application Details

WB 1:1000-1:5000
IHC 1:50-1:200

Contents

Rabbit IgG in phosphate buffered saline, pH 7.4, 150mM NaCl, 0.02% sodium azide and 50% glycerol, 0.4-0.5mg/ml BSA.

Immunogen

A synthesized peptide derived from human CD42b

Purification

Affinity-chromatography

Storage

Store at -20°C for one year. For short term storage and frequent use, store at 4°C for up to one month. Avoid repeated freeze-thaw cycles.

Anti-CD42b Rabbit Monoclonal Antibody - Protein Information

Name GP1BA

Function

GP-Ib, a surface membrane protein of platelets, participates in the formation of platelet plugs by

binding to the A1 domain of vWF, which is already bound to the subendothelium.

Cellular Location

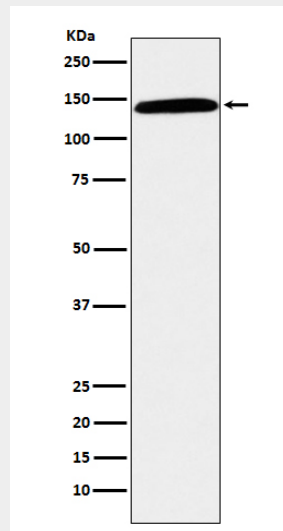
Membrane; Single-pass type I membrane protein.

Anti-CD42b Rabbit Monoclonal Antibody - Protocols

Provided below are standard protocols that you may find useful for product applications.

- [Western Blot](#)
- [Blocking Peptides](#)
- [Dot Blot](#)
- [Immunohistochemistry](#)
- [Immunofluorescence](#)
- [Immunoprecipitation](#)
- [Flow Cytometry](#)
- [Cell Culture](#)

Anti-CD42b Rabbit Monoclonal Antibody - Images



Western blot analysis of CD42b expression in human spleen lysate.