

**Anti-MSR1 Rabbit Monoclonal Antibody**  
**Catalog # ABO15202****Specification**

---

**Anti-MSR1 Rabbit Monoclonal Antibody - Product Information**

Application	WB
Primary Accession	<a href="#">P21757</a>
Host	Rabbit
Isotype	IgG
Reactivity	Rat, Human, Mouse
Clonality	Monoclonal
Format	Liquid

**Description**

Anti-MSR1 Rabbit Monoclonal Antibody . Tested in WB application. This antibody reacts with Human, Mouse, Rat.

**Anti-MSR1 Rabbit Monoclonal Antibody - Additional Information**

**Gene ID** 4481

**Other Names**

Macrophage scavenger receptor types I and II, Macrophage acetylated LDL receptor I and II, Scavenger receptor class A member 1, CD204, MSR1, SCARA1

**Application Details**

WB 1:500-1:2000

**Contents**

Rabbit IgG in phosphate buffered saline, pH 7.4, 150mM NaCl, 0.02% sodium azide and 50% glycerol, 0.4-0.5mg/ml BSA.

**Immunogen**

A synthesized peptide derived from human MSR1

**Purification**

Affinity-chromatography

**Storage**

**Store at -20°C for one year. For short term storage and frequent use, store at 4°C for up to one month. Avoid repeated freeze-thaw cycles.**

**Anti-MSR1 Rabbit Monoclonal Antibody - Protein Information**

**Name** MSR1

**Synonyms** SCARA1

**Function**

Membrane glycoproteins implicated in the pathologic deposition of cholesterol in arterial walls during atherogenesis. Two types of receptor subunits exist. These receptors mediate the endocytosis of a diverse group of macromolecules, including modified low density lipoproteins (LDL) (PubMed:<a href="http://www.uniprot.org/citations/2251254" target="\_blank">2251254</a>). Isoform III does not internalize acetylated LDL (PubMed:<a href="http://www.uniprot.org/citations/9548586" target="\_blank">9548586</a>).

**Cellular Location**

Membrane; Single-pass type II membrane protein.

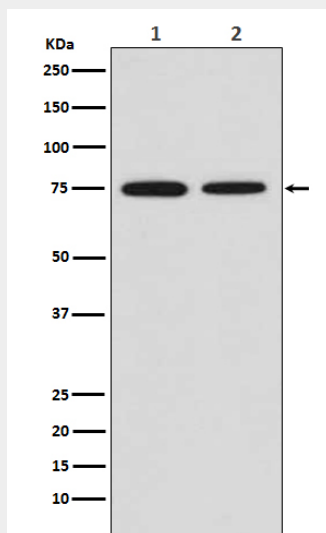
**Tissue Location**

Isoform I, isoform II and isoform III are expressed in monocyte-derived macrophages. Isoform I and isoform II are expressed in the liver, placenta and brain.

**Anti-MSR1 Rabbit Monoclonal Antibody - Protocols**

Provided below are standard protocols that you may find useful for product applications.

- [Western Blot](#)
- [Blocking Peptides](#)
- [Dot Blot](#)
- [Immunohistochemistry](#)
- [Immunofluorescence](#)
- [Immunoprecipitation](#)
- [Flow Cytometry](#)
- [Cell Culture](#)

**Anti-MSR1 Rabbit Monoclonal Antibody - Images**

Western blot analysis of MSR1 expression in (1) HeLa cell lysate; (2) Mouse placenta lysate.