

Anti-Superoxide Dismutase 3 Rabbit Monoclonal Antibody
Catalog # ABO15205**Specification**

Anti-Superoxide Dismutase 3 Rabbit Monoclonal Antibody - Product Information

Application	WB, IHC
Primary Accession	P08294
Host	Rabbit
Isotype	IgG
Reactivity	Human
Clonality	Monoclonal
Format	Liquid

Description

Anti-Superoxide Dismutase 3 Rabbit Monoclonal Antibody . Tested in WB, IHC applications. This antibody reacts with Human.

Anti-Superoxide Dismutase 3 Rabbit Monoclonal Antibody - Additional Information

Gene ID 6649

Other Names

Extracellular superoxide dismutase [Cu-Zn], EC-SOD, 1.15.1.1, SOD3

Application Details

WB 1:500-1:2000
IHC 1:50-1:200

Contents

Rabbit IgG in phosphate buffered saline, pH 7.4, 150mM NaCl, 0.02% sodium azide and 50% glycerol, 0.4-0.5mg/ml BSA.

Immunogen

A synthesized peptide derived from human Superoxide Dismutase 3

Purification

Affinity-chromatography

Storage

Store at -20°C for one year. For short term storage and frequent use, store at 4°C for up to one month. Avoid repeated freeze-thaw cycles.

Anti-Superoxide Dismutase 3 Rabbit Monoclonal Antibody - Protein Information

Name SOD3

Function

Protect the extracellular space from toxic effect of reactive oxygen intermediates by converting superoxide radicals into hydrogen peroxide and oxygen.

Cellular Location

Secreted, extracellular space. Golgi apparatus, trans-Golgi network {ECO:0000250|UniProtKB:O09164}. Note=99% of EC-SOD is anchored to heparan sulfate proteoglycans in the tissue interstitium, and 1% is located in the vasculature in equilibrium between the plasma and the endothelium

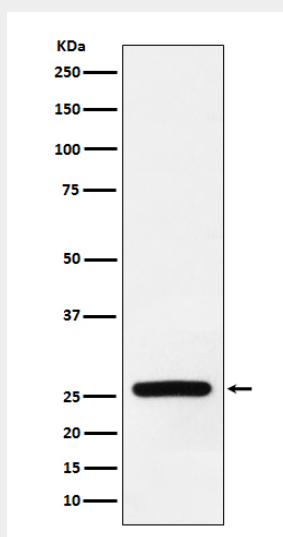
Tissue Location

Expressed in blood vessels, heart, lung, kidney and placenta. Major SOD isoenzyme in extracellular fluids such as plasma, lymph and synovial fluid

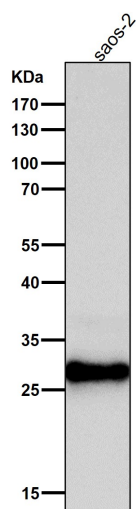
Anti-Superoxide Dismutase 3 Rabbit Monoclonal Antibody - Protocols

Provided below are standard protocols that you may find useful for product applications.

- [Western Blot](#)
- [Blocking Peptides](#)
- [Dot Blot](#)
- [Immunohistochemistry](#)
- [Immunofluorescence](#)
- [Immunoprecipitation](#)
- [Flow Cytometry](#)
- [Cell Culture](#)

Anti-Superoxide Dismutase 3 Rabbit Monoclonal Antibody - Images

Western blot analysis of Superoxide Dismutase 3 expression in human fetal heart lysate.



All lanes use the Antibody at 1:1K dilution for 1 hour at room temperature.