

**Anti-Gata6 Rabbit Monoclonal Antibody**  
**Catalog # ABO15212****Specification**

---

**Anti-Gata6 Rabbit Monoclonal Antibody - Product Information**

Application	WB, IF, ICC
Primary Accession	<a href="#">Q92908</a>
Host	Rabbit
Isotype	IgG
Reactivity	Human
Clonality	Monoclonal
Format	Liquid

**Description**

Anti-Gata6 Rabbit Monoclonal Antibody . Tested in WB, ICC/IF applications. This antibody reacts with Human.

**Anti-Gata6 Rabbit Monoclonal Antibody - Additional Information**

**Gene ID** 2627

**Other Names**

Transcription factor GATA-6, GATA-binding factor 6, GATA6

**Application Details**

WB 1:500-1:2000<br>ICC/IF 1:50-1:200

**Contents**

Rabbit IgG in phosphate buffered saline, pH 7.4, 150mM NaCl, 0.02% sodium azide and 50% glycerol, 0.4-0.5mg/ml BSA.

**Immunogen**

A synthesized peptide derived from human Gata 6

**Purification**

Affinity-chromatography

**Storage**

**Store at -20°C for one year. For short term storage and frequent use, store at 4°C for up to one month. Avoid repeated freeze-thaw cycles.**

**Anti-Gata6 Rabbit Monoclonal Antibody - Protein Information**

**Name** GATA6

**Function**

Transcriptional activator (PubMed:<a href="http://www.uniprot.org/citations/19666519" target="\_blank">19666519</a>, PubMed:<a href="http://www.uniprot.org/citations/22750565" target="\_blank">22750565</a>)

target="\_blank">22750565</a>, PubMed:<a href="http://www.uniprot.org/citations/22824924" target="\_blank">22824924</a>, PubMed:<a href="http://www.uniprot.org/citations/27756709" target="\_blank">27756709</a>). Regulates SEMA3C and PLXNA2 (PubMed:<a href="http://www.uniprot.org/citations/19666519" target="\_blank">19666519</a>). Involved in gene regulation specifically in the gastric epithelium (PubMed:<a href="http://www.uniprot.org/citations/9315713" target="\_blank">9315713</a>). May regulate genes that protect epithelial cells from bacterial infection (PubMed:<a href="http://www.uniprot.org/citations/16968778" target="\_blank">16968778</a>). Involved in bone morphogenetic protein (BMP)-mediated cardiac-specific gene expression (By similarity). Binds to BMP response element (BMPRE) DNA sequences within cardiac activating regions (By similarity). In human skin, controls several physiological processes contributing to homeostasis of the upper pilosebaceous unit. Triggers ductal and sebaceous differentiation as well as limits cell proliferation and lipid production to prevent hyperseborrhoea. Mediates the effects of retinoic acid on sebocyte proliferation, differentiation and lipid production. Also contributes to immune regulation of sebocytes and antimicrobial responses by modulating the expression of anti-inflammatory genes such as IL10 and pro-inflammatory genes such as IL6, TLR2, TLR4, and IFNG. Activates TGFB1 signaling which controls the interfollicular epidermis fate (PubMed:<a href="http://www.uniprot.org/citations/33082341" target="\_blank">33082341</a>).

#### **Cellular Location**

Nucleus

#### **Tissue Location**

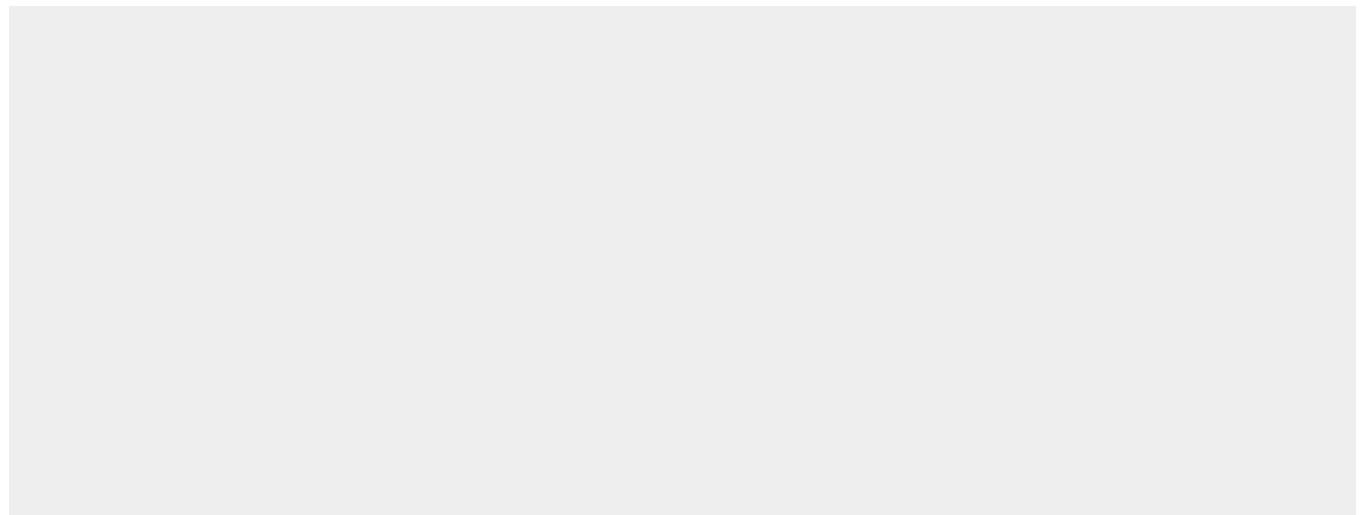
Expressed in heart, gut and gut-derived tissues. Expressed in skin upper pilosebaceous unit. Expression is decreased or lost in acne lesions (PubMed:33082341).

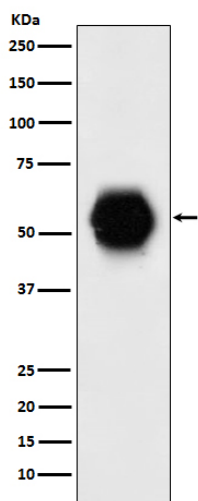
### **Anti-Gata6 Rabbit Monoclonal Antibody - Protocols**

Provided below are standard protocols that you may find useful for product applications.

- [Western Blot](#)
- [Blocking Peptides](#)
- [Dot Blot](#)
- [Immunohistochemistry](#)
- [Immunofluorescence](#)
- [Immunoprecipitation](#)
- [Flow Cytometry](#)
- [Cell Culture](#)

### **Anti-Gata6 Rabbit Monoclonal Antibody - Images**





Western blot analysis of Gata 6 expression in human fetal heart lysate.