

Anti-StAR Rabbit Monoclonal Antibody
Catalog # ABO15218**Specification**

Anti-StAR Rabbit Monoclonal Antibody - Product Information

Application	WB, IHC
Primary Accession	P49675
Host	Rabbit
Isotype	IgG
Reactivity	Human
Clonality	Monoclonal
Format	Liquid

Description

Anti-StAR Rabbit Monoclonal Antibody . Tested in WB, IHC applications. This antibody reacts with Human.

Anti-StAR Rabbit Monoclonal Antibody - Additional Information

Gene ID 6770

Other Names

Steroidogenic acute regulatory protein, mitochondrial, StAR, START domain-containing protein 1, StARD1, STAR, STARD1

Application Details

WB 1:1000-1:5000
IHC 1:50-1:200

Contents

Rabbit IgG in phosphate buffered saline, pH 7.4, 150mM NaCl, 0.02% sodium azide and 50% glycerol, 0.4-0.5mg/ml BSA.

Immunogen

A synthesized peptide derived from human StAR

Purification

Affinity-chromatography

Storage

Store at -20°C for one year. For short term storage and frequent use, store at 4°C for up to one month. Avoid repeated freeze-thaw cycles.

Anti-StAR Rabbit Monoclonal Antibody - Protein Information

Name STAR

Synonyms STARD1

Function

Plays a key role in steroid hormone synthesis by enhancing the metabolism of cholesterol into pregnenolone. Mediates the transfer of cholesterol from the outer mitochondrial membrane to the inner mitochondrial membrane where it is cleaved to pregnenolone.

Cellular Location

Mitochondrion {ECO:0000250|UniProtKB:P51557}.

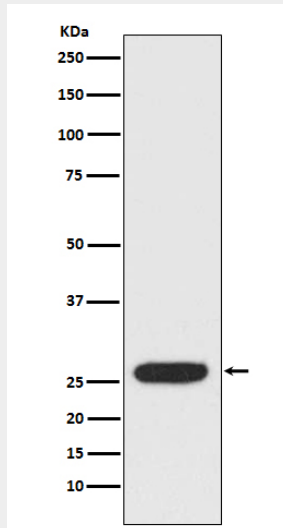
Tissue Location

Expressed in gonads, adrenal cortex and kidney.

Anti-StAR Rabbit Monoclonal Antibody - Protocols

Provided below are standard protocols that you may find useful for product applications.

- [Western Blot](#)
- [Blocking Peptides](#)
- [Dot Blot](#)
- [Immunohistochemistry](#)
- [Immunofluorescence](#)
- [Immunoprecipitation](#)
- [Flow Cytometry](#)
- [Cell Culture](#)

Anti-StAR Rabbit Monoclonal Antibody - Images

Western blot analysis of StAR expression in SK-BR-3 cell lysate.