

Anti-Langerin (CD207) Rabbit Monoclonal Antibody
Catalog # ABO15225**Specification**

Anti-Langerin (CD207) Rabbit Monoclonal Antibody - Product Information

Application	IHC
Primary Accession	O9UJ71
Host	Rabbit
Isotype	IgG
Reactivity	Human
Clonality	Monoclonal
Format	Liquid

Description

Anti-Langerin (CD207) Rabbit Monoclonal Antibody . Tested in IHC application. This antibody reacts with Human.

Anti-Langerin (CD207) Rabbit Monoclonal Antibody - Additional Information

Gene ID 50489

Other Names

C-type lectin domain family 4 member K, Langerin, CD207, CD207, CLEC4K

Application Details

IHC 1:50-1:200

Contents

Rabbit IgG in phosphate buffered saline, pH 7.4, 150mM NaCl, 0.02% sodium azide and 50% glycerol, 0.4-0.5mg/ml BSA.

Immunogen

A synthesized peptide derived from human Langerin (CD207)

Purification

Affinity-chromatography

Storage

Store at -20°C for one year. For short term storage and frequent use, store at 4°C for up to one month. Avoid repeated freeze-thaw cycles.

Anti-Langerin (CD207) Rabbit Monoclonal Antibody - Protein Information

Name CD207

Synonyms CLEC4K

Function

Calcium-dependent lectin displaying mannose-binding specificity. Induces the formation of Birbeck granules (BGs); is a potent regulator of membrane superimposition and zippering. Binds to sulfated as well as mannosylated glycans, keratan sulfate (KS) and beta-glucans. Facilitates uptake of antigens and is involved in the routing and/or processing of antigen for presentation to T cells. Major receptor on primary Langerhans cells for *Candida* species, *Saccharomyces* species, and *Malassezia furfur*. Protects against human immunodeficiency virus-1 (HIV-1) infection. Binds to high-mannose structures present on the envelope glycoprotein which is followed by subsequent targeting of the virus to the Birbeck granules leading to its rapid degradation.

Cellular Location

Membrane; Single- pass type II membrane protein. Note=Found in Birbeck granules (BGs), which are organelles consisting of superimposed and zippered membranes

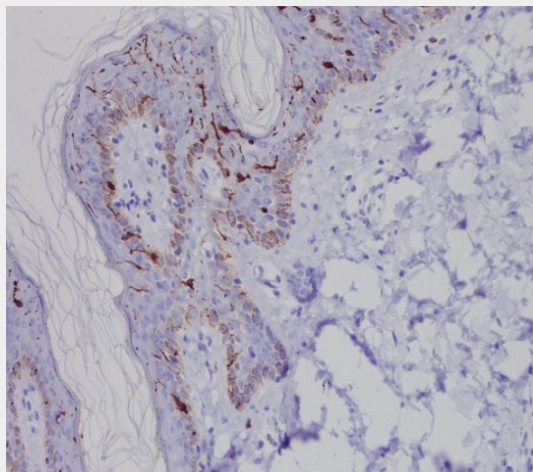
Tissue Location

Exclusively expressed by Langerhans cells. Expressed in astrocytoma and malignant ependymoma, but not in normal brain tissues.

Anti-Langerin (CD207) Rabbit Monoclonal Antibody - Protocols

Provided below are standard protocols that you may find useful for product applications.

- [Western Blot](#)
- [Blocking Peptides](#)
- [Dot Blot](#)
- [Immunohistochemistry](#)
- [Immunofluorescence](#)
- [Immunoprecipitation](#)
- [Flow Cytometry](#)
- [Cell Culture](#)

Anti-Langerin (CD207) Rabbit Monoclonal Antibody - Images

Immunohistochemical analysis of paraffin-embedded human skin, using Langerin (CD207) Antibody.