

Anti-Klotho Rabbit Monoclonal Antibody
Catalog # ABO15233**Specification**

Anti-Klotho Rabbit Monoclonal Antibody - Product Information

Application	WB, IHC
Primary Accession	Q9UEF7
Host	Rabbit
Isotype	IgG
Reactivity	Human, Mouse
Clonality	Monoclonal
Format	Liquid

Description

Anti-Klotho Rabbit Monoclonal Antibody . Tested in WB, IHC applications. This antibody reacts with Human, Mouse.

Anti-Klotho Rabbit Monoclonal Antibody - Additional Information

Gene ID 9365

Other Names

Klotho, 3.2.1.31, Klotho peptide, KL

Application Details

WB 1:500-1:1000
IHC 1:50-1:200

Contents

Rabbit IgG in phosphate buffered saline, pH 7.4, 150mM NaCl, 0.02% sodium azide and 50% glycerol, 0.4-0.5mg/ml BSA.

Immunogen

A synthesized peptide derived from human Klotho

Purification

Affinity-chromatography

Storage

Store at -20°C for one year. For short term storage and frequent use, store at 4°C for up to one month. Avoid repeated freeze-thaw cycles.

Anti-Klotho Rabbit Monoclonal Antibody - Protein Information

Name KL

Function

May have weak glycosidase activity towards glucuronylated steroids. However, it lacks essential active site Glu residues at positions 239 and 872, suggesting it may be inactive as a glycosidase in

vivo. May be involved in the regulation of calcium and phosphorus homeostasis by inhibiting the synthesis of active vitamin D (By similarity). Essential factor for the specific interaction between FGF23 and FGFR1 (By similarity).

Cellular Location

[Isoform 1]: Cell membrane; Single-pass type I membrane protein. Apical cell membrane {ECO:0000250|UniProtKB:O35082}; Single-pass type I membrane protein {ECO:0000250|UniProtKB:O35082}. Note=Isoform 1 shedding leads to a soluble peptide. {ECO:0000250|UniProtKB:O35082} [Klotho peptide]: Secreted {ECO:0000250|UniProtKB:O35082}

Tissue Location

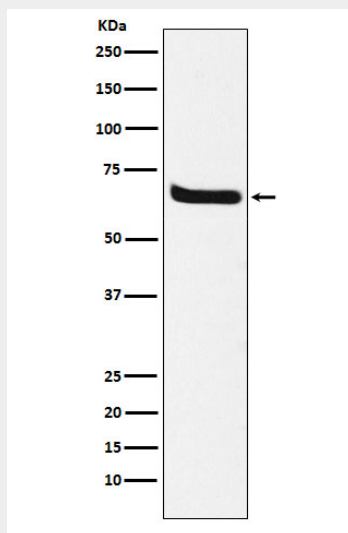
Present in cortical renal tubules (at protein level). Soluble peptide is present in serum and cerebrospinal fluid Expressed in kidney, placenta, small intestine and prostate. Down-regulated in renal cell carcinomas, hepatocellular carcinomas, and in chronic renal failure kidney.

Anti-Klotho Rabbit Monoclonal Antibody - Protocols

Provided below are standard protocols that you may find useful for product applications.

- [Western Blot](#)
- [Blocking Peptides](#)
- [Dot Blot](#)
- [Immunohistochemistry](#)
- [Immunofluorescence](#)
- [Immunoprecipitation](#)
- [Flow Cytometry](#)
- [Cell Culture](#)

Anti-Klotho Rabbit Monoclonal Antibody - Images



Western blot analysis of Klotho expression in human fetal kidney lysate.