

**Anti-PDE4D Rabbit Monoclonal Antibody**  
**Catalog # ABO15240****Specification**

---

**Anti-PDE4D Rabbit Monoclonal Antibody - Product Information**

Application	WB
Primary Accession	<a href="#">Q08499</a>
Host	Rabbit
Isotype	IgG
Reactivity	Human
Clonality	Monoclonal
Format	Liquid

**Description**

Anti-PDE4D Rabbit Monoclonal Antibody . Tested in WB application. This antibody reacts with Human.

**Anti-PDE4D Rabbit Monoclonal Antibody - Additional Information**

**Gene ID** 5144

**Other Names**

3', 5'-cyclic-AMP phosphodiesterase 4D, 3.1.4.53, DPDE3, PDE43, cAMP-specific phosphodiesterase 4D, PDE4D ([http://www.genenames.org/cgi-bin/gene\\_symbol\\_report?hgnc\\_id=8783](http://www.genenames.org/cgi-bin/gene_symbol_report?hgnc_id=8783)), DPDE3

**Application Details**

WB 1:500-1:2000

**Contents**

Rabbit IgG in phosphate buffered saline, pH 7.4, 150mM NaCl, 0.02% sodium azide and 50% glycerol, 0.4-0.5mg/ml BSA.

**Immunogen**

A synthesized peptide derived from human PDE4D

**Purification**

Affinity-chromatography

**Storage**

**Store at -20°C for one year. For short term storage and frequent use, store at 4°C for up to one month. Avoid repeated freeze-thaw cycles.**

**Anti-PDE4D Rabbit Monoclonal Antibody - Protein Information**

**Name** PDE4D ([HGNC:8783](#))

**Synonyms** DPDE3

**Function**

Hydrolyzes the second messenger cAMP, which is a key regulator of many important physiological processes.

**Cellular Location**

Apical cell membrane. Cytoplasm. Membrane. Cytoplasm, cytoskeleton. Cytoplasm, cytoskeleton, microtubule organizing center, centrosome Note=Found in the soluble fraction, associated with membranes, and associated with the cytoskeleton and the centrosome (By similarity) Colocalized with SHANK2 to the apical membrane of colonic crypt cells

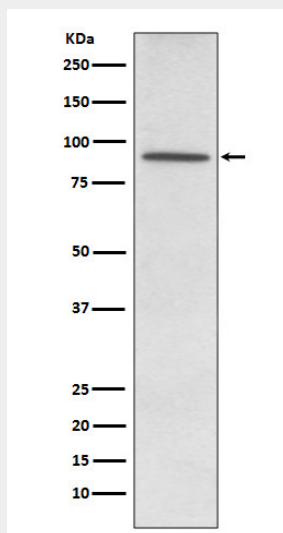
**Tissue Location**

Expressed in colonic epithelial cells (at protein level). Widespread; most abundant in skeletal muscle [Isoform 8]: Detected in brain, placenta, lung and kidney.

**Anti-PDE4D Rabbit Monoclonal Antibody - Protocols**

Provided below are standard protocols that you may find useful for product applications.

- [Western Blot](#)
- [Blocking Peptides](#)
- [Dot Blot](#)
- [Immunohistochemistry](#)
- [Immunofluorescence](#)
- [Immunoprecipitation](#)
- [Flow Cytometry](#)
- [Cell Culture](#)

**Anti-PDE4D Rabbit Monoclonal Antibody - Images**

Western blot analysis of PDE4D expression in K562 cell lysate.