

Anti-PFDN5 Rabbit Monoclonal Antibody
Catalog # ABO15241**Specification**

Anti-PFDN5 Rabbit Monoclonal Antibody - Product Information

Application	WB, IHC, IP
Primary Accession	Q99471
Host	Rabbit
Isotype	IgG
Reactivity	Rat, Human, Mouse
Clonality	Monoclonal
Format	Liquid

Description

Anti-PFDN5 Rabbit Monoclonal Antibody . Tested in WB, IHC, IP applications. This antibody reacts with Human, Mouse, Rat.

Anti-PFDN5 Rabbit Monoclonal Antibody - Additional Information

Gene ID 5204

Other Names

Prefoldin subunit 5, Myc modulator 1, c-Myc-binding protein Mm-1, PFDN5, MM1, PFD5

Application Details

WB 1:500-1:2000
IHC 1:50-1:200
IP 1:50

Contents

Rabbit IgG in phosphate buffered saline, pH 7.4, 150mM NaCl, 0.02% sodium azide and 50% glycerol, 0.4-0.5mg/ml BSA.

Immunogen

A synthesized peptide derived from human PFDN5

Purification

Affinity-chromatography

Storage

Store at -20°C for one year. For short term storage and frequent use, store at 4°C for up to one month. Avoid repeated freeze-thaw cycles.

Anti-PFDN5 Rabbit Monoclonal Antibody - Protein Information

Name PFDN5

Synonyms MM1, PFD5

Function

Binds specifically to cytosolic chaperonin (c-CPN) and transfers target proteins to it. Binds to nascent polypeptide chain and promotes folding in an environment in which there are many competing pathways for nonnative proteins. Represses the transcriptional activity of MYC.

Cellular Location

[Isoform 1]: Nucleus. [Isoform 3]: Nucleus.

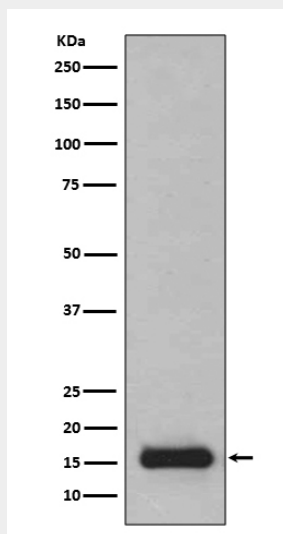
Tissue Location

Highly expressed in pancreas and skeletal muscle and moderately in other tissues

Anti-PFDN5 Rabbit Monoclonal Antibody - Protocols

Provided below are standard protocols that you may find useful for product applications.

- [Western Blot](#)
- [Blocking Peptides](#)
- [Dot Blot](#)
- [Immunohistochemistry](#)
- [Immunofluorescence](#)
- [Immunoprecipitation](#)
- [Flow Cytometry](#)
- [Cell Culture](#)

Anti-PFDN5 Rabbit Monoclonal Antibody - Images

Western blot analysis of PFDN5 expression in 293T cell lysate.