

Anti-RPS19 Rabbit Monoclonal Antibody
Catalog # ABO15267**Specification**

Anti-RPS19 Rabbit Monoclonal Antibody - Product Information

Application	WB, IHC, IP
Primary Accession	P39019
Host	Rabbit
Isotype	IgG
Reactivity	Rat, Human, Mouse
Clonality	Monoclonal
Format	Liquid

Description

Anti-RPS19 Rabbit Monoclonal Antibody . Tested in WB, IHC, IP applications. This antibody reacts with Human, Mouse, Rat.

Anti-RPS19 Rabbit Monoclonal Antibody - Additional Information

Gene ID 6223

Other Names

Small ribosomal subunit protein eS19, 40S ribosomal protein S19, RPS19 (HGNC:10402)

Application Details

WB 1:500-1:2000
IHC 1:50-1:200
IP 1:50

Contents

Rabbit IgG in phosphate buffered saline, pH 7.4, 150mM NaCl, 0.02% sodium azide and 50% glycerol, 0.4-0.5mg/ml BSA.

Immunogen

A synthesized peptide derived from human RPS19

Purification

Affinity-chromatography

Storage

Store at -20°C for one year. For short term storage and frequent use, store at 4°C for up to one month. Avoid repeated freeze-thaw cycles.

Anti-RPS19 Rabbit Monoclonal Antibody - Protein Information

Name RPS19 ([HGNC:10402](#))

Function

Component of the small ribosomal subunit (PubMed:23636399). The ribosome is a large ribonucleoprotein complex responsible for the synthesis of proteins in the cell (PubMed:23636399). Required for pre- rRNA processing and maturation of 40S ribosomal subunits (PubMed:16990592). Part of the small subunit (SSU) processome, first precursor of the small eukaryotic ribosomal subunit. During the assembly of the SSU processome in the nucleolus, many ribosome biogenesis factors, an RNA chaperone and ribosomal proteins associate with the nascent pre-rRNA and work in concert to generate RNA folding, modifications, rearrangements and cleavage as well as targeted degradation of pre-ribosomal RNA by the RNA exosome (PubMed:34516797).

Cellular Location

Cytoplasm. Nucleus, nucleolus

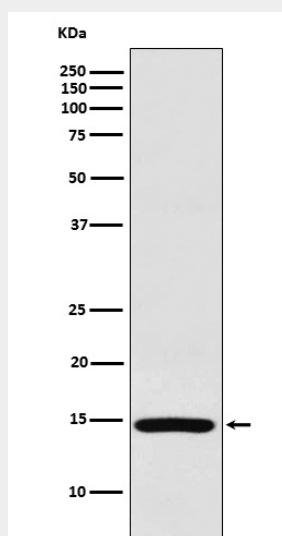
Tissue Location

Higher level expression is seen in the colon carcinoma tissue than normal colon tissue

Anti-RPS19 Rabbit Monoclonal Antibody - Protocols

Provided below are standard protocols that you may find useful for product applications.

- [Western Blot](#)
- [Blocking Peptides](#)
- [Dot Blot](#)
- [Immunohistochemistry](#)
- [Immunofluorescence](#)
- [Immunoprecipitation](#)
- [Flow Cytometry](#)
- [Cell Culture](#)

Anti-RPS19 Rabbit Monoclonal Antibody - Images

Western blot analysis of RPS19 expression in HeLa cell lysate.