

Anti-ILF2 Rabbit Monoclonal Antibody
Catalog # ABO15272**Specification**

Anti-ILF2 Rabbit Monoclonal Antibody - Product Information

Application	WB, IHC, IP, FC
Primary Accession	Q12905
Host	Rabbit
Isotype	IgG
Reactivity	Rat, Human, Mouse
Clonality	Monoclonal
Format	Liquid

Description

Anti-ILF2 Rabbit Monoclonal Antibody . Tested in WB, IHC, IP, Flow Cytometry applications. This antibody reacts with Human, Mouse, Rat.

Anti-ILF2 Rabbit Monoclonal Antibody - Additional Information

Gene ID 3608

Other Names

Interleukin enhancer-binding factor 2, Nuclear factor of activated T-cells 45 kDa, ILF2, NF45

Application Details

WB 1:500-1:2000
IHC 1:50-1:200
IP 1:50
FC 1:100

Contents

Rabbit IgG in phosphate buffered saline, pH 7.4, 150mM NaCl, 0.02% sodium azide and 50% glycerol, 0.4-0.5mg/ml BSA.

Immunogen

A synthesized peptide derived from human ILF2

Purification

Affinity-chromatography

Storage

Store at -20°C for one year. For short term storage and frequent use, store at 4°C for up to one month. Avoid repeated freeze-thaw cycles.

Anti-ILF2 Rabbit Monoclonal Antibody - Protein Information

Name ILF2

Synonyms NF45

Function

Chromatin-interacting protein that forms a stable heterodimer with interleukin enhancer-binding factor 3/ILF3 and plays a role in several biological processes including transcription, innate immunity or cell growth (PubMed:[18458058](http://www.uniprot.org/citations/18458058), PubMed:[31212927](http://www.uniprot.org/citations/31212927)). Essential for the efficient reshuttling of ILF3 (isoform 1 and isoform 2) into the nucleus. Together with ILF3, forms an RNA-binding complex that is required for mitotic progression and cytokinesis by regulating the expression of a cluster of mitotic genes. Mechanistically, competes with STAU1/STAU2-mediated mRNA decay (PubMed:[32433969](http://www.uniprot.org/citations/32433969)). Also plays a role in the inhibition of various viruses including Japanese encephalitis virus or enterovirus 71.

Cellular Location

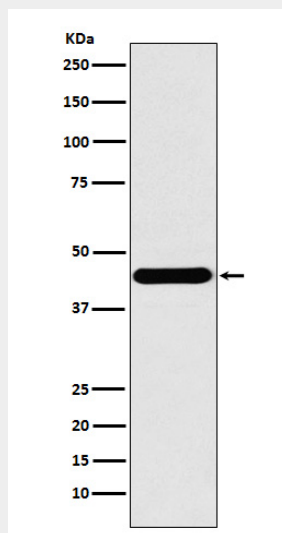
Nucleus, nucleolus. Cytoplasm. Nucleus. Note=Localized in cytoplasmic mRNP granules containing untranslated mRNAs

Anti-ILF2 Rabbit Monoclonal Antibody - Protocols

Provided below are standard protocols that you may find useful for product applications.

- [Western Blot](#)
- [Blocking Peptides](#)
- [Dot Blot](#)
- [Immunohistochemistry](#)
- [Immunofluorescence](#)
- [Immunoprecipitation](#)
- [Flow Cytometry](#)
- [Cell Culture](#)

Anti-ILF2 Rabbit Monoclonal Antibody - Images



Western blot analysis of ILF2 expression in A431 cell lysate.