

Anti-FGF1 Rabbit Monoclonal Antibody
Catalog # ABO15282**Specification**

Anti-FGF1 Rabbit Monoclonal Antibody - Product Information

Application	WB, IHC
Primary Accession	P05230
Host	Rabbit
Isotype	IgG
Reactivity	Rat, Human, Mouse
Clonality	Monoclonal
Format	Liquid

Description

Anti-FGF1 Rabbit Monoclonal Antibody . Tested in WB, IHC applications. This antibody reacts with Human, Mouse, Rat.

Anti-FGF1 Rabbit Monoclonal Antibody - Additional Information

Gene ID 2246

Other Names

Fibroblast growth factor 1, FGF-1, Acidic fibroblast growth factor, aFGF, Endothelial cell growth factor, ECGF, Heparin-binding growth factor 1, HBGF-1, FGF1, FGFA

Application Details

WB 1:500-1:2000
IHC 1:50-1:200

Contents

Rabbit IgG in phosphate buffered saline, pH 7.4, 150mM NaCl, 0.02% sodium azide and 50% glycerol, 0.4-0.5mg/ml BSA.

Immunogen

A synthesized peptide derived from human FGF1

Purification

Affinity-chromatography

Storage

Store at -20°C for one year. For short term storage and frequent use, store at 4°C for up to one month. Avoid repeated freeze-thaw cycles.

Anti-FGF1 Rabbit Monoclonal Antibody - Protein Information

Name FGF1

Synonyms FGFA

Function

Plays an important role in the regulation of cell survival, cell division, angiogenesis, cell differentiation and cell migration. Functions as a potent mitogen in vitro. Acts as a ligand for FGFR1 and integrins. Binds to FGFR1 in the presence of heparin leading to FGFR1 dimerization and activation via sequential autophosphorylation on tyrosine residues which act as docking sites for interacting proteins, leading to the activation of several signaling cascades. Binds to integrin ITGAV:ITGB3. Its binding to integrin, subsequent ternary complex formation with integrin and FGFR1, and the recruitment of PTPN11 to the complex are essential for FGF1 signaling. Induces the phosphorylation and activation of FGFR1, FRS2, MAPK3/ERK1, MAPK1/ERK2 and AKT1 (PubMed:18441324, PubMed:20422052). Can induce angiogenesis (PubMed:23469107).

Cellular Location

Secreted. Cytoplasm. Cytoplasm, cell cortex. Cytoplasm, cytosol. Nucleus. Note=Lacks a cleavable signal sequence Within the cytoplasm, it is transported to the cell membrane and then secreted by a non-classical pathway that requires Cu(2+) ions and S100A13. Secreted in a complex with SYT1 (By similarity). Binding of exogenous FGF1 to FGFR facilitates endocytosis followed by translocation of FGF1 across endosomal membrane into the cytosol Nuclear import from the cytosol requires the classical nuclear import machinery, involving proteins KPNA1 and KPNB1, as well as LRRC59

Tissue Location

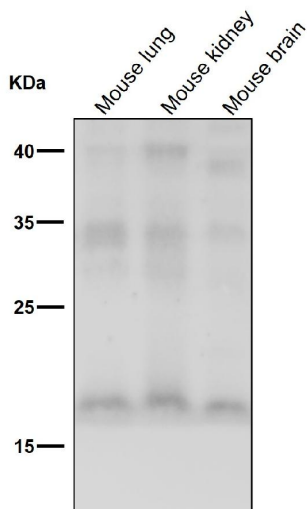
Predominantly expressed in kidney and brain. Detected at much lower levels in heart and skeletal muscle

Anti-FGF1 Rabbit Monoclonal Antibody - Protocols

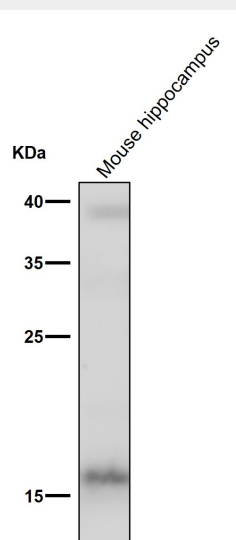
Provided below are standard protocols that you may find useful for product applications.

- [Western Blot](#)
- [Blocking Peptides](#)
- [Dot Blot](#)
- [Immunohistochemistry](#)
- [Immunofluorescence](#)
- [Immunoprecipitation](#)
- [Flow Cytometry](#)
- [Cell Culture](#)

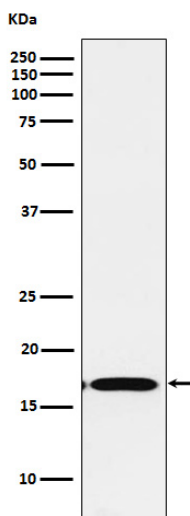
Anti-FGF1 Rabbit Monoclonal Antibody - Images



All lanes use the Antibody at 1:500 dilution for 1 hour at room temperature.



All lanes use the Antibody at 1:500 dilution for 1 hour at room temperature.



Western blot analysis of FGF1 expression in Mouse kidney lysate.