

Anti-ELMO1 Rabbit Monoclonal Antibody
Catalog # ABO15303**Specification**

Anti-ELMO1 Rabbit Monoclonal Antibody - Product Information

Application	WB, IF, ICC, IP, FC
Primary Accession	Q92556
Host	Rabbit
Isotype	IgG
Reactivity	Rat, Human, Mouse
Clonality	Monoclonal
Format	Liquid

Description

Anti-ELMO1 Rabbit Monoclonal Antibody . Tested in WB, ICC/IF, IP, Flow Cytometry applications.
This antibody reacts with Human, Mouse, Rat.

Anti-ELMO1 Rabbit Monoclonal Antibody - Additional Information

Gene ID 9844

Other Names

Engulfment and cell motility protein 1, Protein ced-12 homolog, ELMO1, KIAA0281

Calculated MW

84 kDa KDa

Application Details

WB 1:500-1:2000
ICC/IF 1:50-1:200
IP 1:50
FC 1:50

Contents

Rabbit IgG in phosphate buffered saline, pH 7.4, 150mM NaCl, 0.02% sodium azide and 50% glycerol, 0.4-0.5mg/ml BSA.

Immunogen

A synthesized peptide derived from human ELMO1

Purification

Affinity-chromatography

Storage

Store at -20°C for one year. For short term storage and frequent use, store at 4°C for up to one month. Avoid repeated freeze-thaw cycles.

Anti-ELMO1 Rabbit Monoclonal Antibody - Protein Information

Name ELMO1

Synonyms KIAA0281**Function**

Involved in cytoskeletal rearrangements required for phagocytosis of apoptotic cells and cell motility. Acts in association with DOCK1 and CRK. Was initially proposed to be required in complex with DOCK1 to activate Rac Rho small GTPases. May enhance the guanine nucleotide exchange factor (GEF) activity of DOCK1.

Cellular Location

Cytoplasm. Cell membrane. Note=Translocation to plasma membrane seems to be mediated by DOCK1 and CRK

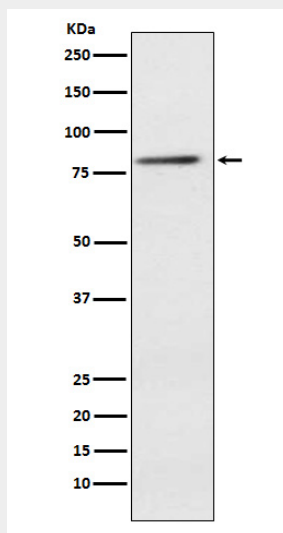
Tissue Location

Widely expressed, with a higher expression in the spleen and placenta

Anti-ELMO1 Rabbit Monoclonal Antibody - Protocols

Provided below are standard protocols that you may find useful for product applications.

- [Western Blot](#)
- [Blocking Peptides](#)
- [Dot Blot](#)
- [Immunohistochemistry](#)
- [Immunofluorescence](#)
- [Immunoprecipitation](#)
- [Flow Cytometry](#)
- [Cell Culture](#)

Anti-ELMO1 Rabbit Monoclonal Antibody - Images

Western blot analysis of ELMO1 expression in Jurkat cell lysate.