

Anti-SLC6A1 / GAT1 Rabbit Monoclonal Antibody
Catalog # ABO15304**Specification**

Anti-SLC6A1 / GAT1 Rabbit Monoclonal Antibody - Product Information

Application	WB
Primary Accession	P30531
Host	Rabbit
Isotype	IgG
Reactivity	Rat, Human, Mouse
Clonality	Monoclonal
Format	Liquid

Description

Anti-SLC6A1 / GAT1 Rabbit Monoclonal Antibody . Tested in WB application. This antibody reacts with Human, Mouse, Rat.

Anti-SLC6A1 / GAT1 Rabbit Monoclonal Antibody - Additional Information

Gene ID 6529

Other Names

Sodium- and chloride-dependent GABA transporter 1, GAT-1, Solute carrier family 6 member 1, SLC6A1, GABATR, GABT1, GAT1

Application Details

WB 1:500-1:2000

Contents

Rabbit IgG in phosphate buffered saline, pH 7.4, 150mM NaCl, 0.02% sodium azide and 50% glycerol, 0.4-0.5mg/ml BSA.

Immunogen

A synthesized peptide derived from human SLC6A1 / GAT1

Purification

Affinity-chromatography

Storage

Store at -20°C for one year. For short term storage and frequent use, store at 4°C for up to one month. Avoid repeated freeze-thaw cycles.

Anti-SLC6A1 / GAT1 Rabbit Monoclonal Antibody - Protein Information

Name SLC6A1

Synonyms GABATR, GABT1, GAT1

Function

Mediates transport of gamma-aminobutyric acid (GABA) together with sodium and chloride and is responsible for the reuptake of GABA from the synapse (PubMed:30132828). The translocation of GABA, however, may also occur in the reverse direction leading to the release of GABA (By similarity). The direction and magnitude of GABA transport is a consequence of the prevailing thermodynamic conditions, determined by membrane potential and the intracellular and extracellular concentrations of Na(+), Cl(-) and GABA (By similarity). Can also mediate sodium- and chloride-dependent transport of hypotaurine but to a much lower extent as compared to GABA (By similarity).

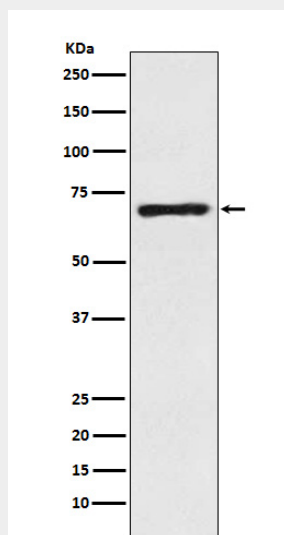
Cellular Location

Cell membrane {ECO:0000250|UniProtKB:P23978}; Multi-pass membrane protein. Presynapse {ECO:0000250|UniProtKB:P31648}. Note=Localized at the presynaptic terminals of interneurons. {ECO:0000250|UniProtKB:P31648}

Anti-SLC6A1 / GAT1 Rabbit Monoclonal Antibody - Protocols

Provided below are standard protocols that you may find useful for product applications.

- [Western Blot](#)
- [Blocking Peptides](#)
- [Dot Blot](#)
- [Immunohistochemistry](#)
- [Immunofluorescence](#)
- [Immunoprecipitation](#)
- [Flow Cytometry](#)
- [Cell Culture](#)

Anti-SLC6A1 / GAT1 Rabbit Monoclonal Antibody - Images

Western blot analysis of GABA Transporter 1 / GAT 1 expression in Human fetal brain lysate.