

Anti-NPHS2 Rabbit Monoclonal Antibody
Catalog # ABO15314**Specification**

Anti-NPHS2 Rabbit Monoclonal Antibody - Product Information

Application	WB, IHC
Primary Accession	Q9NP85
Host	Rabbit
Isotype	IgG
Reactivity	Rat, Human, Mouse
Clonality	Monoclonal
Format	Liquid

Description

Anti-NPHS2 Rabbit Monoclonal Antibody . Tested in WB, IHC applications. This antibody reacts with Human, Mouse, Rat.

Anti-NPHS2 Rabbit Monoclonal Antibody - Additional Information

Gene ID 7827

Other Names

Podocin, NPHS2

Application Details

WB 1:500-1:2000
IHC 1:50-1:200

Contents

Rabbit IgG in phosphate buffered saline, pH 7.4, 150mM NaCl, 0.02% sodium azide and 50% glycerol, 0.4-0.5mg/ml BSA.

Immunogen

A synthesized peptide derived from human NPHS2

Purification

Affinity-chromatography

Storage

Store at -20°C for one year. For short term storage and frequent use, store at 4°C for up to one month. Avoid repeated freeze-thaw cycles.

Anti-NPHS2 Rabbit Monoclonal Antibody - Protein Information

Name NPHS2

Function

Plays a role in the regulation of glomerular permeability, acting probably as a linker between the plasma membrane and the cytoskeleton.

Cellular Location

[Isoform 1]: Cell membrane; Peripheral membrane protein

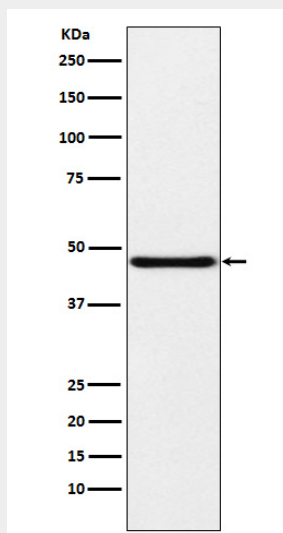
Tissue Location

Almost exclusively expressed in the podocytes of fetal and mature kidney glomeruli

Anti-NPHS2 Rabbit Monoclonal Antibody - Protocols

Provided below are standard protocols that you may find useful for product applications.

- [Western Blot](#)
- [Blocking Peptides](#)
- [Dot Blot](#)
- [Immunohistochemistry](#)
- [Immunofluorescence](#)
- [Immunoprecipitation](#)
- [Flow Cytometry](#)
- [Cell Culture](#)

Anti-NPHS2 Rabbit Monoclonal Antibody - Images

Western blot analysis of NPHS2 expression in Human fetal kidney lysate.