

Anti-CoREST Rabbit Monoclonal Antibody
Catalog # ABO15315**Specification**

Anti-CoREST Rabbit Monoclonal Antibody - Product Information

Application	WB, IHC, IF, ICC
Primary Accession	Q9UKL0
Host	Rabbit
Isotype	IgG
Reactivity	Rat, Human, Mouse
Clonality	Monoclonal
Format	Liquid

Description

Anti-CoREST Rabbit Monoclonal Antibody . Tested in WB, IHC, ICC/IF applications. This antibody reacts with Human, Mouse, Rat.

Anti-CoREST Rabbit Monoclonal Antibody - Additional Information

Gene ID 23186

Other Names

REST corepressor 1, Protein CoREST, RCOR1, KIAA0071, RCOR

Calculated MW

66 kDa KDa

Application Details

WB 1:1000-1:5000
IHC 1:50-1:200
ICC/IF 1:50-1:200

Contents

Rabbit IgG in phosphate buffered saline, pH 7.4, 150mM NaCl, 0.02% sodium azide and 50% glycerol, 0.4-0.5mg/ml BSA.

Immunogen

A synthesized peptide derived from human CoREST

Purification

Affinity-chromatography

Storage

Store at -20°C for one year. For short term storage and frequent use, store at 4°C for up to one month. Avoid repeated freeze-thaw cycles.

Anti-CoREST Rabbit Monoclonal Antibody - Protein Information

Name RCOR1

Synonyms KIAA0071, RCOR

Function

Essential component of the BHC complex, a corepressor complex that represses transcription of neuron-specific genes in non-neuronal cells. The BHC complex is recruited at RE1/NRSE sites by REST and acts by deacetylating and demethylating specific sites on histones, thereby acting as a chromatin modifier. In the BHC complex, it serves as a molecular beacon for the recruitment of molecular machinery, including MeCP2 and SUV39H1, that imposes silencing across a chromosomal interval. Plays a central role in demethylation of Lys-4 of histone H3 by promoting demethylase activity of KDM1A on core histones and nucleosomal substrates. It also protects KDM1A from the proteasome. Component of a RCOR/GFI/KDM1A/HDAC complex that suppresses, via histone deacetylase (HDAC) recruitment, a number of genes implicated in multilineage blood cell development and controls hematopoietic differentiation.

Cellular Location

Nucleus {ECO:0000255|PROSITE-ProRule:PRU00512, ECO:0000255|PROSITE-ProRule:PRU00624, ECO:0000269|PubMed:10734093, ECO:0000269|PubMed:15897453}. Note=Upon infection by HSV-1, it is partially translocated into the cytoplasm in an HSV-1-dependent manner

Tissue Location

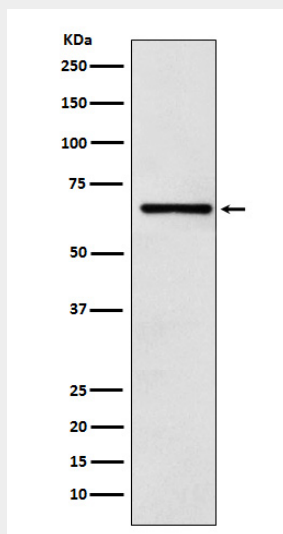
Ubiquitously expressed.

Anti-CoREST Rabbit Monoclonal Antibody - Protocols

Provided below are standard protocols that you may find useful for product applications.

- [Western Blot](#)
- [Blocking Peptides](#)
- [Dot Blot](#)
- [Immunohistochemistry](#)
- [Immunofluorescence](#)
- [Immunoprecipitation](#)
- [Flow Cytometry](#)
- [Cell Culture](#)

Anti-CoREST Rabbit Monoclonal Antibody - Images



Western blot analysis of CoREST expression in Molt-4 cell lysate.