

**Anti-P70 S6 Kinase beta Rabbit Monoclonal Antibody**  
Catalog # ABO15324

**Specification**

**Anti-P70 S6 Kinase beta Rabbit Monoclonal Antibody - Product Information**

Application	WB, IHC, IF, ICC, FC
Primary Accession	<a href="#">Q9UBS0</a>
Host	Rabbit
Isotype	IgG
Reactivity	Rat, Human, Mouse
Clonality	Monoclonal
Format	Liquid

**Description**

Anti-P70 S6 Kinase beta Rabbit Monoclonal Antibody . Tested in WB, IHC, ICC/IF, Flow Cytometry applications. This antibody reacts with Human, Mouse, Rat.

**Anti-P70 S6 Kinase beta Rabbit Monoclonal Antibody - Additional Information**

**Gene ID** 6199

**Other Names**

Ribosomal protein S6 kinase beta-2, S6K-beta-2, S6K2, 2.7.11.1, 70 kDa ribosomal protein S6 kinase 2, P70S6K2, p70-S6K 2, S6 kinase-related kinase, SRK, Serine/threonine-protein kinase 14B, p70 ribosomal S6 kinase beta, S6K-beta, p70 S6 kinase beta, p70 S6K-beta, p70 S6KB, p70-beta, RPS6KB2, STK14B

**Calculated MW**

53 kDa KDa

**Application Details**

WB 1:1000-1:5000<br>IHC 1:50-1:200<br>ICC/IF 1:50-1:200<br>FC 1:50

**Contents**

Rabbit IgG in phosphate buffered saline, pH 7.4, 150mM NaCl, 0.02% sodium azide and 50% glycerol, 0.4-0.5mg/ml BSA.

**Immunogen**

A synthesized peptide derived from human P70 S6 Kinase beta

**Purification**

Affinity-chromatography

**Storage**

**Store at -20°C for one year. For short term storage and frequent use, store at 4°C for up to one month. Avoid repeated freeze-thaw cycles.**

**Anti-P70 S6 Kinase beta Rabbit Monoclonal Antibody - Protein Information**

**Name** RPS6KB2

**Synonyms** STK14B

**Function**

Phosphorylates specifically ribosomal protein S6 (PubMed:<a href="http://www.uniprot.org/citations/29750193" target="\_blank">29750193</a>). Seems to act downstream of mTOR signaling in response to growth factors and nutrients to promote cell proliferation, cell growth and cell cycle progression in an alternative pathway regulated by MEAK7 (PubMed:<a href="http://www.uniprot.org/citations/29750193" target="\_blank">29750193</a>).

**Cellular Location**

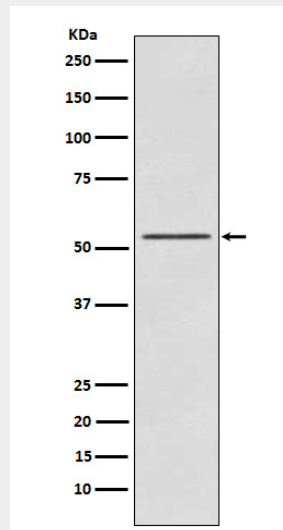
Cytoplasm. Nucleus.

**Anti-P70 S6 Kinase beta Rabbit Monoclonal Antibody - Protocols**

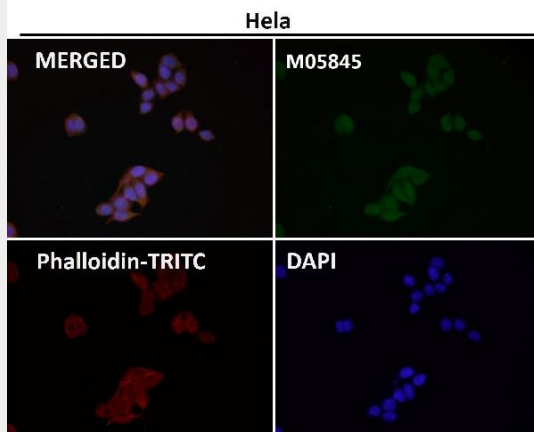
Provided below are standard protocols that you may find useful for product applications.

- [Western Blot](#)
- [Blocking Peptides](#)
- [Dot Blot](#)
- [Immunohistochemistry](#)
- [Immunofluorescence](#)
- [Immunoprecipitation](#)
- [Flow Cytometry](#)
- [Cell Culture](#)

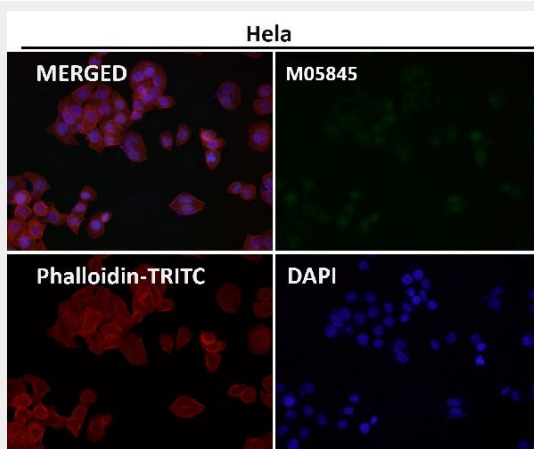
**Anti-P70 S6 Kinase beta Rabbit Monoclonal Antibody - Images**



Western blot analysis of P70 S6 Kinase beta expression in K562 cell lysate.



Immunofluorescent analysis using the Antibody at 1:50 dilution.



Immunofluorescent analysis using the Antibody at 1:500 dilution.