

Anti-Retinoic Acid Receptor gamma Rabbit Monoclonal Antibody
Catalog # ABO15336**Specification****Anti-Retinoic Acid Receptor gamma Rabbit Monoclonal Antibody - Product Information**

Application	WB, IF, ICC
Primary Accession	P13631
Host	Rabbit
Isotype	IgG
Reactivity	Rat, Human
Clonality	Monoclonal
Format	Liquid

Description

Anti-Retinoic Acid Receptor gamma Rabbit Monoclonal Antibody . Tested in WB, ICC/IF applications. This antibody reacts with Human, Rat.

Anti-Retinoic Acid Receptor gamma Rabbit Monoclonal Antibody - Additional Information

Gene ID 5916

Other Names

Retinoic acid receptor gamma, RAR-gamma, Nuclear receptor subfamily 1 group B member 3, RARG, NR1B3

Calculated MW

50 kDa KDa

Application Details

WB 1:500-1:2000
ICC/IF 1:50-1:200

Contents

Rabbit IgG in phosphate buffered saline, pH 7.4, 150mM NaCl, 0.02% sodium azide and 50% glycerol, 0.4-0.5mg/ml BSA.

Immunogen

A synthesized peptide derived from human Retinoic Acid Receptor gamma

Purification

Affinity-chromatography

Storage

Store at -20°C for one year. For short term storage and frequent use, store at 4°C for up to one month. Avoid repeated freeze-thaw cycles.

Anti-Retinoic Acid Receptor gamma Rabbit Monoclonal Antibody - Protein Information

Name RARG

Synonyms NR1B3**Function**

Receptor for retinoic acid. Retinoic acid receptors bind as heterodimers to their target response elements in response to their ligands, all-trans or 9-cis retinoic acid, and regulate gene expression in various biological processes. The RAR/RXR heterodimers bind to the retinoic acid response elements (RARE) composed of tandem 5'-AGGTCA-3' sites known as DR1-DR5. In the absence of ligand, acts mainly as an activator of gene expression due to weak binding to corepressors. Required for limb bud development. In concert with RARA or RARB, required for skeletal growth, matrix homeostasis and growth plate function (By similarity).

Cellular Location

Nucleus. Cytoplasm

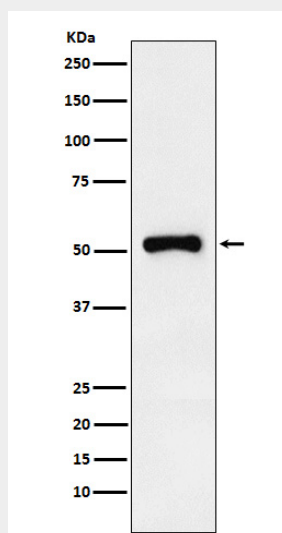
Tissue Location

Expressed in aortic endothelial cells (at protein level).

Anti-Retinoic Acid Receptor gamma Rabbit Monoclonal Antibody - Protocols

Provided below are standard protocols that you may find useful for product applications.

- [Western Blot](#)
- [Blocking Peptides](#)
- [Dot Blot](#)
- [Immunohistochemistry](#)
- [Immunofluorescence](#)
- [Immunoprecipitation](#)
- [Flow Cytometry](#)
- [Cell Culture](#)

Anti-Retinoic Acid Receptor gamma Rabbit Monoclonal Antibody - Images

Western blot analysis of Retinoic Acid Receptor gamma expression in HeLa cell lysate.