

Anti-TBLR1 Rabbit Monoclonal Antibody
Catalog # ABO15340**Specification**

Anti-TBLR1 Rabbit Monoclonal Antibody - Product Information

Application	WB, IHC, IF, ICC
Primary Accession	Q9BZK7
Host	Rabbit
Isotype	IgG
Reactivity	Rat, Human, Mouse
Clonality	Monoclonal
Format	Liquid

Description

Anti-TBLR1 Rabbit Monoclonal Antibody . Tested in WB, IHC, ICC/IF applications. This antibody reacts with Human, Mouse, Rat.

Anti-TBLR1 Rabbit Monoclonal Antibody - Additional Information

Gene ID 79718

Other Names

F-box-like/WD repeat-containing protein TBL1XR1, Nuclear receptor corepressor/HDAC3 complex subunit TBLR1, TBL1-related protein 1, Transducin beta-like 1X-related protein 1, TBL1XR1, IRA1, TBLR1

Calculated MW

56 kDa KDa

Application Details

WB 1:500-1:2000
IHC 1:50-1:200
ICC/IF 1:50-1:200

Contents

Rabbit IgG in phosphate buffered saline, pH 7.4, 150mM NaCl, 0.02% sodium azide and 50% glycerol, 0.4-0.5mg/ml BSA.

Immunogen

A synthesized peptide derived from human TBLR1

Purification

Affinity-chromatography

Storage

Store at -20°C for one year. For short term storage and frequent use, store at 4°C for up to one month. Avoid repeated freeze-thaw cycles.

Anti-TBLR1 Rabbit Monoclonal Antibody - Protein Information

Name TBL1XR1

Synonyms IRA1, TBLR1

Function

F-box-like protein involved in the recruitment of the ubiquitin/19S proteasome complex to nuclear receptor-regulated transcription units. Plays an essential role in transcription activation mediated by nuclear receptors. Probably acts as integral component of the N-CoR corepressor complex that mediates the recruitment of the 19S proteasome complex, leading to the subsequent proteasomal degradation of N-CoR complex, thereby allowing cofactor exchange, and transcription activation.

Cellular Location

Nucleus.

Tissue Location

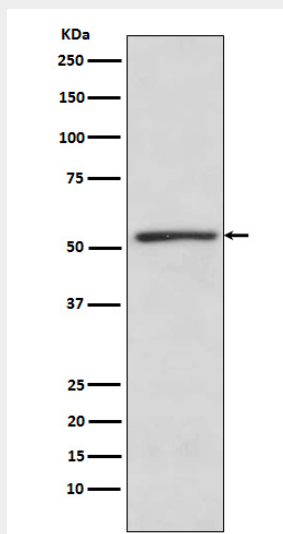
Widely expressed including the pituitary, hypothalamus, white and brown adipose tissue, muscle and liver

Anti-TBLR1 Rabbit Monoclonal Antibody - Protocols

Provided below are standard protocols that you may find useful for product applications.

- [Western Blot](#)
- [Blocking Peptides](#)
- [Dot Blot](#)
- [Immunohistochemistry](#)
- [Immunofluorescence](#)
- [Immunoprecipitation](#)
- [Flow Cytometry](#)
- [Cell Culture](#)

Anti-TBLR1 Rabbit Monoclonal Antibody - Images



Western blot analysis of TBLR1 expression in K562 cell lysate.